

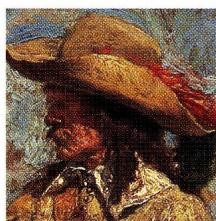
# Contents



## INTRODUCTION 6

## CONTEXT : THE THIRTY YEARS' WAR II

- ◆ From the origins of the war to the end of the "Swedish Period" II
- ◆ France enters the war 18



## THE FRENCH ARMY BEFORE THE WAR [1617-1634] 35

- ◆ The Dutch School 37
- ◆ The French Infantry from 1617 to 1634 38
- ◆ The French Cavalry from 1617 to 1634 48
- ◆ Artillery from 1617 to 1648 58
- ◆ Command 60
- ◆ On campaign 66



## THE FRENCH ARMY IN THE THIRTY YEARS' WAR [1635-1648] 79

- ◆ The French Infantry from 1635 to 164 80
- ◆ The French Cavalry from 1635 to 1648 86
- ◆ Artillery from 1635 to 1648 94
- ◆ Command 96
- ◆ The Swedish influence 100
- ◆ On campaign 102



## UNIFORMS AND COLOURS 117

## OPERATIONS OF THE FRENCH ARMY [1620-1648] 123

### [APPENDIX I : CHRONOLOGY] 134

### [APPENDIX II : EYEWITNESS ACCOUNTS] 138

- ◆ The battle of the pas de Suse [1630] 138
- ◆ The battle of Rocroi [1643] 141
- ◆ The battle of Freiburg [1644] 148
- ◆ The battle of Allerheim - Nördlingen [1645] 154
- ◆ The battle of Lens [1648] 160

### [APPENDIX III : SCULPT AND PAINT FIGURINES FROM THE PERIOD OF THE THIRTY YEARS' WAR] 168

- ◆ Sculpt and paint a bust of Richelieu 168

## BIBLIOGRAPHY 172