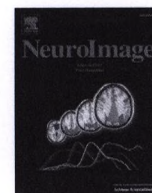




ELSEVIER

Volume 63, Issue 4, December 2012



CONTENTS

- 1775 Recovery of the default mode network after demanding neurofeedback training occurs in spatio-temporally segregated subnetworks
Dimitri Van De Ville, Permi Jhooti, Tanja Haas, Rotem Kopel, Karl-Olof Lovblad, Klaus Scheffler, and Sven Haller
- 1782 Structural and diffusion MRI measures of the hippocampus and memory performance
T. den Heijer, F. van der Lijn, M.W. Vernooij, M. de Groot, P.J. Koudstaal, A. van der Lugt, G.P. Krestin, A. Hofman, W.J. Niessen, and M.M.B. Breteler
- 1790 Single-scan R_2^* measurement with macroscopic field inhomogeneity correction
Yoonho Nam, Dongyeob Han, and Dong-Hyun Kim
- 1800 Reward circuit function in high BMI individuals with compulsive overeating: Similarities with addiction
Francesca M. Filbey, Ursula S. Myers, and Samuel DeWitt
- 1807 Brain perfusion SPECT in the mouse: Normal pattern according to gender and age
Ivayla Apostolova, Andreas Wunder, Ulrich Dirnagl, Roger Michel, Nina Stemmer, Mathias Lukas, Thorsten Derlin, Betina Gregor-Mamoudou, Jürgen Goldschmidt, Winfried Brenner, and Ralph Buchert
- 1818 Greater sensitivity to nonaccidental than metric changes in the relations between simple shapes in the lateral occipital cortex
Jiye G. Kim and Irving Biederman
- 1827 Abnormal network topographies and changes in global activity: Absence of a causal relationship
Vijay Dhawan, Chris C. Tang, Yilong Ma, Phoebe Spetsieris, and David Eidelberg
- 1833 Paradoxical results of adaptive false discovery rate procedures in neuroimaging studies
Philip T. Reiss, Armin Schwartzman, Feihan Lu, Lei Huang, and Erika Proal
- 1841 Conditions for quantitative evaluation of injured spinal cord by in vivo diffusion tensor imaging and tractography: Preclinical longitudinal study in common marmosets
Tsunehiko Konomi, Kanehiro Fujiyoshi, Keigo Hikishima, Yuji Komaki, Osahiko Tsuji, Hirotaka James Okano, Yoshiaki Toyama, Hideyuki Okano, and Masaya Nakamura
- 1854 Evidence for alterations in central noradrenergic signaling in irritable bowel syndrome
Steven Berman, Brandall Suyenobu, Bruce D. Naliboff, Joshua Bueller, Jean Stains, Heng Wong, Mark Mandelkern, Leah Fitzgerald, Gordon Ohning, Arpana Gupta, Jennifer S. Labus, Kirsten Tillisch, and Emeran A. Mayer
- 1864 Iterative approach of dual regression with a sparse prior enhances the performance of independent component analysis for group functional magnetic resonance imaging (fMRI) data
Yong-Hwan Kim, Junghoe Kim, and Jong-Hwan Lee

- 1890 Bootstrapping GEE models for fMRI regional connectivity
Gina M. D'Angelo, Nicole A. Lazar, Gongfu Zhou, William F. Eddy, John C. Morris, and Yvette I. Sheline
- 1901 Joint neuronal tuning for object form and position in the human lateral occipital complex
Sean P. MacEvoy and Zoe Yang
- 1909 Changes in functional connectivity support conscious object recognition
Fatma Imamoglu, Thorsten Kahnt, Christof Koch, and John-Dylan Haynes
- 1918 Task induced modulation of neural oscillations in electrophysiological brain networks
M.J. Brookes, E.B. Liddle, J.R. Hale, M.W. Woolrich, H. Luckhoo, P.F. Liddle, and P.G. Morris



Now covered in Current Contents/Life Sciences, Science Citation Index, Neuroscience Citation Index, and Index Medicus (MEDLINE). Also covered in the abstract and citation database SciVerse Scopus®. Full text available on SciVerse ScienceDirect®.