

Circulation Research

Volume 106 Number 2 February 5, 2010

★ **Featured Article**

📄 Online supplementary information

🎬 Online movie files

Available at <http://circres.ahajournals.org>

News and Views

The Year's Successes in Failure
Ruth Williams 213

Inaugural Editorial

The New *Circulation Research*: A Manifesto
Roberto Bolli 216

Editorials

Vascular Dendritic Cells as Gatekeepers of Lipid Accumulation Within Nascent Atherosclerotic Plaques
Gwendalyn J. Randolph, Stephane Potteaux 227

Targeting Sarcoplasmic Reticulum Ca Uptake to Improve Heart Failure: Hit or Miss
Karin R. Sipido, Peter Vangheluwe 230

Another Broken Heart: Loss of Lamina-Associated Polypeptide 2 α Causes Systolic Dysfunction
Valerie L.R.M. Verstraeten, Jan Lammerding 234

Reviews

Be Still, My Beating Heart: Never!
Brian O'Rourke 238

Development of the Pacemaker Tissues of the Heart
Vincent M. Christoffels, Gertien J. Smits, Andreas Kispert, Antoon F. M. Moorman 240

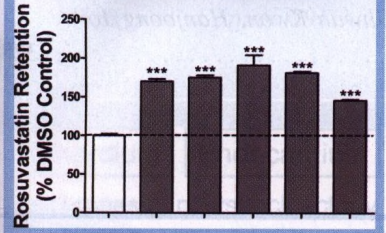
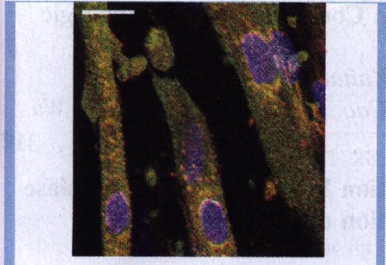
Mapping Cardiac Pacemaker Circuits: Methodological Puzzles of the Sinoatrial Node Optical Mapping
Igor R. Efimov, Vadim V. Fedorov, Boyoung Joung, Shien-Fong Lin 255

Protein Acetylation in the Cardiorenal Axis: The Promise of Histone Deacetylase Inhibitors
Erik W. Bush, Timothy A. McKinsey 272

Protein S-Nitrosylation and Cardioprotection
Junhui Sun, Elizabeth Murphy 285

Molecular Medicine

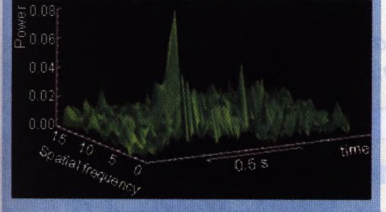
Human Skeletal Muscle Drug Transporters Determine Local Exposure and Toxicity of Statins
Michael J. Knauer, Bradley L. Urquhart, Henriette E. Meyer zu Schwabedissen, Ute I. Schwarz, Christopher J. Lemke, Brenda F. Leake, Richard B. Kim, Rommel G. Tirona 297



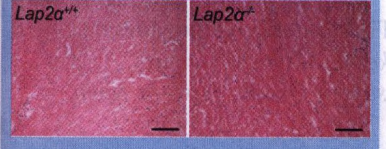
Drug Transporters and Statin Toxicity
Knauer et al., page 297



Derlin-3 in the Heart
Belmont et al., page 307



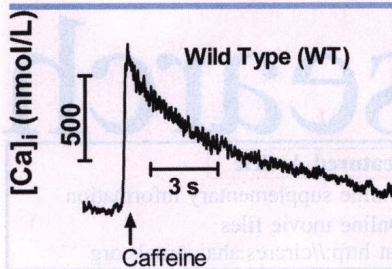
Rad Regulation of EC Coupling
Wang et al., page 317



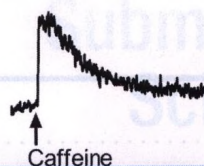
Impaired Function in Lap2 α ^{-/-} Mice
Gotic et al., page 346



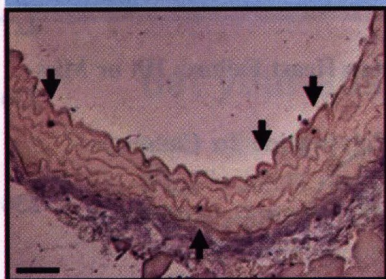
CIRCULATION RESEARCH (ISSN 0009-7330) is published semimonthly except one issue per month in January and December and three issues per month in April and September by Lippincott Williams & Wilkins, at 12107 Insurance Way, Hagerstown, MD 21740. Business offices are located at 227 East Washington Square, Philadelphia, PA 19106-3780. Production offices are located at 351 West Camden Street, Baltimore, MD 21201-2436. Individuals may subscribe for their personal use at the following annual rates: Domestic: \$240 for members and \$520 for nonmembers. International: \$297 for members of an American Heart Association scientific council and \$650 for nonmembers. Contact Lippincott Williams & Wilkins for single copy rates and subscription rates for medical professionals in training and for libraries, reading rooms, and other multiple-use institutions. Periodicals postage paid at Hagerstown, MD, and additional mailing offices. POSTMASTER: Send address changes to CIRCULATION RESEARCH, American Heart Association, Lippincott Williams & Wilkins, 12107 Insurance Way, Hagerstown, MD 21740.



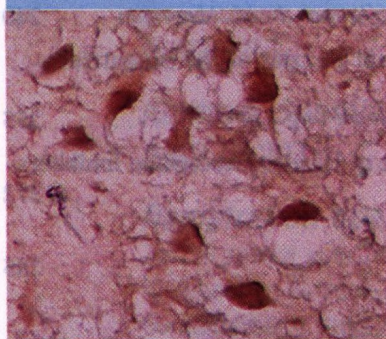
Wild Type (WT)



CaMKII and SR Ca²⁺
Dependent Failure
Zhang *et al.*, page 354



VSMC Apoptosis Induces
Inflammation
Clarke *et al.*, page 363



Brain ACE2 and Hypertension
Feng *et al.*, page 373



Dendritic Cells in Atherosclerosis
Paulson *et al.*, page 383

Cellular Biology

Roles for Endoplasmic Reticulum–Associated Degradation and the Novel Endoplasmic Reticulum Stress Response Gene Derlin-3 in the Ischemic Heart

Peter J. Belmont, Wenqiong J. Chen, Matthew N. San Pedro, Donna J. Thuerlauf, Nicole Gellings Lowe, Natalie Gude, Brett Hilton, Roland Wolkowicz, Mark A. Sussman, Christopher C. Glembotski 307

Rad As a Novel Regulator of Excitation–Contraction Coupling and β -Adrenergic Signaling in Heart

Gang Wang, Xiaojun Zhu, Wenjun Xie, Peidong Han, Kaitao Li, Zhongcui Sun, Yanru Wang, Chunlei Chen, Ruisheng Song, Chunmei Cao, Jifeng Zhang, Caihong Wu, Jie Liu, Heping Cheng 317

GTP Cyclohydrolase I Phosphorylation and Interaction With GTP Cyclohydrolase Feedback Regulatory Protein Provide Novel Regulation of Endothelial Tetrahydrobiopterin and Nitric Oxide

Li Li, Amir Rezvan, John C. Salerno, Ahsan Husain, Kihwan Kwon, Hanjoong Jo, David G. Harrison, Wei Chen 328

Integrative Physiology

Cyclooxygenase-2–Dependent Prostacyclin Formation and Blood Pressure Homeostasis: Targeted Exchange of Cyclooxygenase Isoforms in Mice

Ying Yu, Jane Stubbe, Salam Ibrahim, Wen-liang Song, Emer M. Smyth, Colin D. Funk, Garret A. FitzGerald 337

★Lamina-Associated Polypeptide 2 α Loss Impairs Heart Function and Stress Response in Mice

Ivana Gotic, Michael Leschnik, Ursula Kolm, Mato Markovic, Bernhard J. Haubner, Katarzyna Biadasiewicz, Bernhard Metzler, Colin L. Stewart, Roland Foisner ... 346

Phospholamban Ablation Rescues Sarcoplasmic Reticulum Ca²⁺ Handling but Exacerbates Cardiac Dysfunction in CaMKII δ_C Transgenic Mice

Tong Zhang, Tao Guo, Shikha Mishra, Nancy D. Dalton, Evangelia G. Kranias, Kirk L. Peterson, Donald M. Bers, Joan Heller Brown 354

Vascular Smooth Muscle Cell Apoptosis Induces Interleukin-1–Directed Inflammation: Effects of Hyperlipidemia-Mediated Inhibition of Phagocytosis

Murray C.H. Clarke, Sara Talib, Nichola L. Figg, Martin R. Bennett 363

★Brain-Selective Overexpression of Human Angiotensin-Converting Enzyme Type 2 Attenuates Neurogenic Hypertension

Yumei Feng, Huijing Xia, Yanhui Cai, Carmen M. Halabi, Lenice K. Becker, Robson A.S. Santos, Robert C. Speth, Curt D. Sigmund, Eric Lazartigues 373

★Resident Intimal Dendritic Cells Accumulate Lipid and Contribute to the Initiation of Atherosclerosis

Kim E. Paulson, Su-Ning Zhu, Mian Chen, Sabrina Nurmohamed, Jenny Jongstra-Bilen, Myron I. Cybulsky 383

Inhibition of Semaphorin As a Novel Strategy for Therapeutic Angiogenesis

Junji Moriya, Tohru Minamino, Kaoru Tateno, Sho Okada, Akiyoshi Uemura, Ippei Shimizu, Masataka Yokoyama, Aika Nojima, Mitsuhiro Okada, Hisashi Koga, Issei Komuro 391

