



CONTENTS



ORIGINAL ARTICLES: Clinical Endoscopy



- 223 **Imaging of subsquamous Barrett's epithelium with ultrahigh-resolution optical coherence tomography: a histologic correlation study**

M. J. Cobb, J. H. Hwang, M. P. Upton, Y. Chen, B. K. Oelschlager, D. E. Wood, M. B. Kimmey, X. Li



- 231 **Optical coherence tomography in Barrett's esophagus: the road to clinical utility**

A. F. Peery, N. J. Shaheen

- 235 **Does Barrett's esophagus respond to chemoradiation therapy for adenocarcinoma of the esophagus?**

J. S. Barthel, S. T. Kucera, J. L. Lin, S. E. Hoffe, J. R. Strosberg, I. Ahmed, T. J. Dilling, C. W. Stevens

- 241 **A second-look endoscopy after endoscopic submucosal dissection for gastric epithelial neoplasm may be unnecessary: a retrospective analysis of postendoscopic submucosal dissection bleeding**

O. Goto, M. Fujishiro, S. Kodashima, S. Ono, K. Niimi, K. Hirano, N. Yamamichi, K. Koike



- 249 **Periductal hypoechoic sign: an endosonographic finding associated with pancreatic malignancy**

S.-H. Lee, N. Ozden, R. Pawa, Y. Hwangbo, D. K. Pleskow, R. Chuttani, M. S. Sawhney



- 256 **What the heck is this new periductal hypoechoic sign?**

J. Affronti



- 260 **Survival in patients with pancreatic cancer after the diagnosis of malignant ascites or liver metastases by EUS-FNA**

J. DeWitt, M. Yu, M. A. Al-Haddad, S. Sherman, L. McHenry, J. K. LeBlanc



- 266 **Needle-knife sphincterotomy: factors predicting its use and the relationship with post-ERCP pancreatitis (with video)**

A. A. Bailey, M. J. Bourke, A. J. Kaffes, K. Byth, E. Y. Lee, S. J. Williams



- 272 **Needle-knife sphincterotomy and post-ERCP pancreatitis: time to lower the threshold for the needle?**

T. C. K. Tham, J. Vandervoort



- 275 **Difficult biliary cannulation: use of physician-controlled wire-guided cannulation over pancreatic duct stent to reduce the rate of precut sphincterotomy (with video)**

G. A. Coté, M. Ansstas, R. Pawa, S. A. Edmundowicz, S. S. Jonnalagadda, D. K. Pleskow, R. R. Azar

- 280 **Indications and detection, completion, and retention rates of small-bowel capsule endoscopy: a systematic review**

Z. Liao, R. Gao, C. Xu, Z.-S. Li

- 287 **Safety and efficacy of double-balloon enteroscopy in pediatric patients**

N. Nishimura, H. Yamamoto, T. Yano, Y. Hayashi, M. Arashiro, T. Miyata, K. Sunada, K. Sugano



- 295 **Balloon by balloon, inch by inch**

P. Mamula

- 298 **Training and transfer of colonoscopy skills: a multinational, randomized, blinded, controlled trial of simulator versus bedside training**

A. Haycock, A. D. Koch, P. Familiari, F. van Delft, E. Dekker, L. Petruzzello, J. Haringsma, S. Thomas-Gibson



- 308 **Computers for colonoscopy training: where do they fit in?**

J. Cohen

- 312 **Time-gated fluorescence spectroscopy improves endoscopic detection of low-grade dysplasia in ulcerative colitis**

M.-A. Ortner, V. Fusco, B. Ebert, U. Sukowski, J. Weber-Eibel, B. Fleige, M. Stolte, G. Oberhuber, H. Rinneberg, H. Lochs



- 319 **Colonoscopy training in gastroenterology fellowships: determining competence**

B. J. Spier, M. Benson, P. R. Pfau, G. Nelligan, M. R. Lucey, E. A. Gaumnitz



- 325 **North of 100 and south of 500: where does the "sweet spot" of colonoscopic competence lie?**

J. J. Vargo

- 327 **Characterization of forces applied by endoscopists during colonoscopy by using a wireless colonoscopy force monitor**

L. Y. Korman, V. Egorov, S. Tsuryupa, B. Corbin, M. Anderson, N. Sarvazyan, A. Sarvazyan

- 335 **Variations between endoscopists in rates of detection of colorectal neoplasia and their impact on a regional screening program based on colonoscopy after fecal occult blood testing**

J.-F. Bretagne, S. Hamonic, C. Piette, S. Manfredi, E. Leray, G. Durand, F. Riou



- 342 **The best screening test for colorectal cancer is the one that gets done well**

J. E. Allison



ORIGINAL ARTICLES: Experimental Endoscopy

- 346 **Image-guided biopsy in the esophagus through comprehensive optical frequency domain imaging and laser marking: a study in living swine**

M. J. Suter, P. A. Jillella, B. J. Vakoc, E. F. Halpern, M. Mino-Kenudson, G. Y. Lauwers, B. E. Bouma, N. S. Nishioka, G. J. Tearney

Copyright © 2010 by the American Society for Gastrointestinal Endoscopy

Gastrointestinal Endoscopy (ISSN 0016-5107) is published monthly (semi-monthly in April) by Elsevier Inc., 360 Park Avenue South, New York, NY 10010-1710. Periodicals postage paid at New York, NY and additional mailing offices. POSTMASTER: Send address changes to *Gastrointestinal Endoscopy*, Elsevier Health Sciences Division, Subscription Customer Service, 3251 Riverport Lane, Maryland Heights, MO 63043.



- 354 **Somewhere over the rainbow**
M. B. Wallace
- 357 **Face and construct validity of a computer-based virtual reality simulator for ERCP**
J. G. Bittner IV, J. D. Mellinger, T. Imam, R. R. Schade, B. V. MacFadyen Jr

CME EXAMINATION

- 365 **CME Activity**

REVIEW ARTICLE

- 366 **Population-based prevalence estimates of history of colonoscopy or sigmoidoscopy: review and analysis of recent trends**
C. Stock, U. Haug, H. Brenner

NEW METHODS: Clinical Endoscopy

- 382 **Management of major postsurgical gastroesophageal intrathoracic leaks with an endoscopic vacuum-assisted closure system**
J. Wedemeyer, M. Brangewitz, S. Kubicka, S. Jackobs, M. Winkler, M. Neipp, J. Klemnpauer, M. P. Manns, A. S. Schneider

- 387 **Endoluminal management of anastomotic dehiscence after esophagectomy: an increasing quiver of options reflects the difficulty in realizing a definitive therapy**
T. Murphy, B. A. Jobe

NEW METHODS: Experimental Endoscopy

- 390 **Transgastric endoluminal gastrojejunostomy: technical development from bench to animal study (with video)**
P. W. Yan Chiu, E. K. Wai Ng, A. Y. Bun Teoh, C. C. Hing Lam, J. Y. Wong Lau, J. J. Yiu Sung

AT THE FOCAL POINT

- 394 **Eosinophilic esophagitis misdiagnosed twice as esophageal candidiasis**
J. M. Infante, L. F. Lamana
- 395 **Endoscopic management of multiple colonic fistulae secondary to acute pancreatitis (with video)**
S. O. Hwang, T. H. Lee, J. W. Park, S-H. Park, S-J. Kim
- 397 **Colonic invasion of malignant peritoneal mesothelioma**
C. C. Chan, H. Isomoto, K. Ohnita, Y. Mizuta, S. Kohno, T. Hayashi
- 399 **Autofluorescence imaging of a diminutive, depressed-type early colon cancer invaded to the submucosal layer**
Y. Takeuchi, N. Uedo, K. Higashino, R. Ishihara, M. Tatsuta, H. Iishi, M. Matsumura
- 400 **Fulminant amebic colitis mimicking pseudomembranous colitis**
J. S. Koo, W. S. Choi, D. W. Park

CASE STUDIES

- 402 **Percutaneous transesophageal gastrostomy tube placement: an alternative to percutaneous endoscopic gastrostomy in patients with intra-abdominal metastasis**
A. K. Singal, A. A. Dekovich, A. L. Tam, M. J. Wallace

- 406 **A case of intraductal papillary mucinous neoplasm of the pancreas rupturing both the stomach and duodenum**

M. Shimizu, A. Kawaguchi, S. Nagao, H. Hozumi, S. Komoto, R. Hokari, S. Miura, K. Hatsuse, S. Ogata

- 413 **EUS-guided hepaticogastrostomy with a fully covered metal stent as the biliary diversion technique for an occluded biliary metal stent after a failed ERCP (with videos)**

D. H. Park, T-J. Song, J. Eum, S-H. Moon, S. S. Lee, D-W. Seo, S-K. Lee, M-H. Kim

BRIEF REPORTS

- 420 **Autoimmune pancreatitis presenting with IgG4-positive multiple gastric polyps**
R. Kaji, Y. Okabe, Y. Ishida, H. Takedatsu, A. Kawahara, H. Aino, Y. Morimitsu, R. Maekawa, A. Toyonaga, O. Tsuruta, M. Sata

- 422 **Spiral-enteroscopy-assisted enteral stent placement for palliation of malignant small-bowel obstruction (with video)**

A. M. Lennon, V. Chandrasekhara, E. J. Shin, P. I. Okolo III

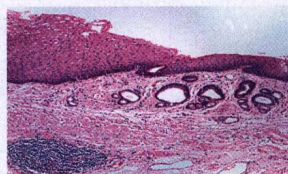
- 425 **EUS-guided drainage of an isolated primary tubercular prostatic abscess**

R. Puri, P. Jain, R. Sud, M. Kumar, S. Hussain, A. Basnotra, M. A. Eloubeidi

LETTERS TO THE EDITOR

- 429 **Ocult adenocarcinoma after esophagectomy for Barrett's high-grade dysplasia**
F. Donnellan, G. C. Harewood, S. E. Patchett
- 429 **Previous experience and long-term follow-up of Schatzki's rings treated with electrosurgical incision**
M. Guelrud
- 429 **The mucosal pattern in the non-neoplastic gastric mucosa by using magnifying narrow-band imaging endoscopy significantly correlates with gastric cancer risk**
T. Tahara, T. Shibata, M. Nakamura, M. Okubo, D. Yoshioka, T. Arisawa, I. Hirata
- 430 **EUS-guided celiac plexus block for chronic pancreatitis: a placebo-controlled trial should be the first priority**
A. V. Sahai, J. Wyse
- 431 **Response**
J. K. LeBlanc, J. DeWitt, W. Okumu, K. McGreevy, M. Symms, L. McHenry, S. Sherman, T. Imperiale, C. Johnson

The cover



Imaging of subsquamous Barrett's epithelium with ultrahigh-resolution optical coherence tomography: a histologic correlation study (pp 223-30)



**Prospective randomized trial comparing EUS and
EGD for transmural drainage of pancreatic
pseudocysts: a need for a large randomized study**

B. Sauer, M. Kahaleh

432 Response

S. Varadarajulu

**433 Improve anorectal examination by the
cap-assisted colonoscopy method**

Y. T. Lee

READER SERVICES

14A Focus On

16A ASGE Update


18A In Upcoming Issues

20A In the current issue of *Endoscopy*

22A Information for Readers

**Instructions for authors are available online at www.giejournal.org and
www.ees.elsevier.com/gie and should be consulted before submission.**

Full-text online access to *Gastrointestinal Endoscopy* is now available for all print subscribers. See page 234 for details.

 **Online Audio and Podcasting**

Audio and Podcasts of article abstracts published in *Gastrointestinal Endoscopy* are now available online. Recordings are edited by Ian Gralnek, MD, Senior Associate Editor, and performed by Deborah Bowman, MFA, Managing Editor of *Gastrointestinal Endoscopy*.

Log on to www.giejournal.org to listen to recordings from the current issue.

Editorial

Commentary on preceding article

CME

CME examination article



Online component



Online video



Online audio



Author interview series