

Page 2751

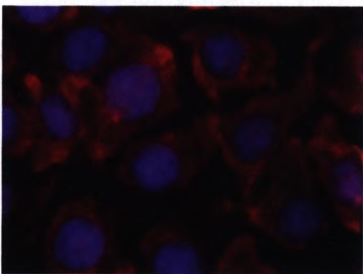


EDITORIAL

- 2737 **Clinical Snippets**
- 2738 **Research Snippets**
- 2739 **Editors' Picks**
- 2740 **Journal Club: Re-Examining Cutaneous Immunity**
J Vega, J Tzu and RS Kirsner

COMMENTARIES

- 2741 **Smoking and Psoriasis: From Epidemiology to Pathomechanisms**
L Naldi and SR Mercuri
- 2743 **Adoptive Cell Transfer in the Treatment of Metastatic Melanoma**
P thor Straten and JC Becker
- 2745 **Analyzing the Cost of Preventing Nonmelanoma Skin Cancer**
SC King and S Chen
- 2747 **Regulation Gone Wrong: A Subset of Sézary Patients Have Malignant Regulatory T Cells**
RA Clark



Page 2784

ORIGINAL ARTICLES

Clinical Research

- 2751 **Regulation of Skin Collagen Metabolism *In Vitro* Using a Pulsed 660 nm LED Light Source: Clinical Correlation with a Single-Blinded Study**
D Barolet, CJ Roberge, FA Auger, A Boucher and L Germain
- 2760 **Oral Contraceptives: A Risk Factor for Squamous Cell Carcinoma?**
KM Applebaum, HH Nelson, MS Zens, TA Stukel, SK Spencer and MR Karagas
- 2766 **Regular Sunscreen Use Is a Cost-Effective Approach to Skin Cancer Prevention in Subtropical Settings**
LG Gordon, PA Scuffham, JC van der Pols, P McBride, GM Williams and AC Green

Genetics

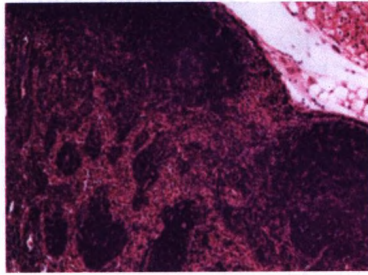
- 2772 ***In Vitro* Analysis of *LIPH* Mutations Causing Hypotrichosis Simplex: Evidence Confirming the Role of Lipase H and Lysophosphatidic Acid in Hair Growth**
SM Pasternack, I von Kugelgen, M Müller, V Oji, H Traupe, E Sprecher, MM Nöthen, AR Janecke and RC Betz
- 2777 **Association between *IL13* Polymorphisms and Psoriatic Arthritis Is Modified by Smoking**
KC Duffin, IC Freeny, SJ Schrodli, B Wong, B-J Feng, R Soltani-Arabshahi, T Rakkhit, DE Goldgar and GG Krueger

Immunology/Infection

- 2784 **Identification of Glucocorticoid-Induced TNF Receptor-Related Protein Ligand on Keratinocytes: Ligation by GITR Induces Keratinocyte Chemokine Production and Augments T-Cell Proliferation**
AM Byrne, E Goleva and DYM Leung



Page 2805



Page 2818

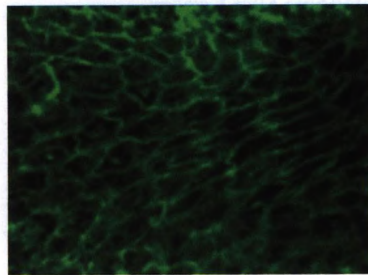
- 2795 Global Gene Expression Analysis Reveals Evidence for Decreased Lipid Biosynthesis and Increased Innate Immunity in Uninvolved Psoriatic Skin**
JE Gudjonsson, J Ding, X Li, RP Nair, T Tejasvi, ZS Qin, D Ghosh, A Aphale, DL Gumucio, JJ Voorhees, GR Abecasis and JT Elder
- 2805 Keratinocytes Function as Accessory Cells for Presentation of Endogenous Antigen Expressed in the Epidermis**
BS Kim, F Miyagawa, Y-H Cho, CL Bennett, BE Clausen and SI Katz
- 2818 *In Vivo* Real-Time, Multicolor, Quantum Dot Lymphatic Imaging**
N Kosaka, M Ogawa, N Sato, PL Choyke and H Kobayashi

Keratinocytes/Epidermis

- 2823 Antigen Selection of Anti-DSG1 Autoantibodies During and Before the Onset of Endemic Pemphigus Foliaceus**
Y Qian, SH Clarke, V Aoki, G Hans-Filho, EA Rivitti and LA Diaz, for the Cooperative Group on Fogo Selvagem Research

Melanocytes/Melanoma

- 2835 Treatment of Metastatic Melanoma with Autologous Melan-A/Mart-1-Specific Cytotoxic T Lymphocyte Clones**
A Khammari, N Labarrière, V Vignard, J-M Nguyen, M-C Pandolfino, AC Knol, G Quéreux, S Saiagh, A Brocard, F Jotereau and B Dreno
- 2843 Targeted Depletion of Polo-Like Kinase (Plk) 1 Through Lentiviral shRNA or a Small-Molecule Inhibitor Causes Mitotic Catastrophe and Induction of Apoptosis in Human Melanoma Cells**
TL Schmit, W Zhong, V Setaluri, VS Spiegelman and N Ahmad



Page 2823

Neurobiology

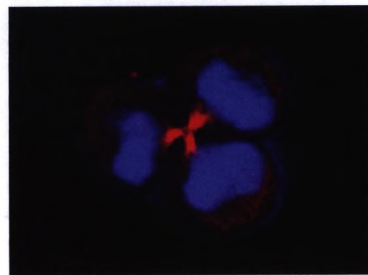
- 2854 Leukotriene B₄ Mediates Sphingosylphosphorylcholine-Induced Itch-Associated Responses in Mouse Skin**
T Andoh, A Saito and Y Kuraishi

Photobiology

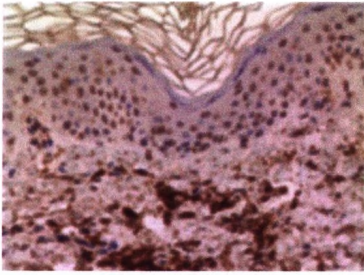
- 2861 Severely Photosensitive Psoriasis: A Phenotypically Defined Patient Subset**
KJ Rutter, REB Watson, LF Cotterell, T Brenn, CEM Griffiths and LE Rhodes

Tumor Biology

- 2868 Merkel Cell Polyomavirus in Cutaneous Squamous Cell Carcinoma of Immunocompetent Individuals**
AM Dworkin, SY Tseng, DC Allain, OH Iwenofu, SB Peters and AE Toland
- 2875 FOXP3⁺CD25⁻ Tumor Cells with Regulatory Function in Sézary Syndrome**
JB Heid, A Schmidt, N Oberle, S Goerdts, PH Krammer, E Suri-Payer and C-D Klemke
- 2886 Increased Risk of Squamous Cell Carcinoma in Simultaneous Pancreas Kidney Transplant Recipients Compared with Kidney Transplant Recipients**
HC Wisgerhof, PJM van der Boog, JW de Fijter, R Wolterbeek, GW Haasnoot, FHJ Claas, R Willemze and JNB Bavinck



Page 2843



Page 2861

Wound Healing

2895 Improvement of Nerve Regeneration in Tissue-Engineered Skin Enriched with Schwann Cells

M Blais, M Grenier and F Berthod

LETTERS TO THE EDITOR

2901 Histological Characterization of Cutaneous Nerve Fibers Containing Gastrin-Releasing Peptide in NC/Nga Mice: An Atopic Dermatitis Model

M Tominaga, H Ogawa and K Takamori

2905 Analysis of Extracutaneous Spread in Mycosis Fungoides

MR Kamstrup, HO Madsen, GL Skovgaard and R Gniadecki

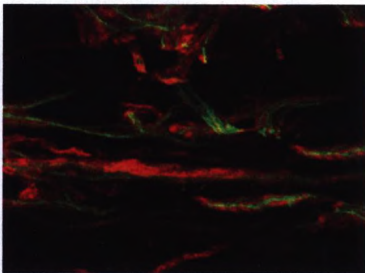
ABSTRACTS

2908 ASDR Abstracts

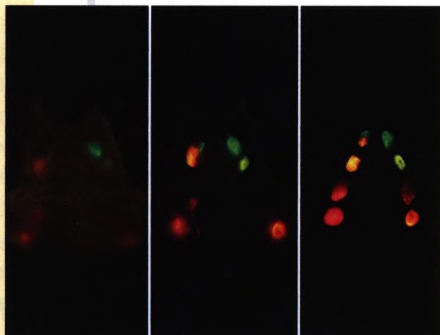
2924 Editor's Report 2008

2926 Society for Investigative Dermatology 2009 Acknowledgments

2928 Society for Investigative Dermatology 2009 Annual Meeting Minutes



Page 2895



COVER IMAGE

A single right neck lymph node receives fluorescent quantum dots from two lymphatic basins: chin (green) and ear (orange). For details, see the article by Kosaka *et al.*, page 2818.