

Forum

- ▶ 3252 In this issue
- ▶ 3254 News and EFIS




Highlights




A swift roll of the small intestine with some prominent SILT

MINI-REVIEWS

- ▶ 3257 **Elie Metchnikoff: Father of natural immunity**
Siamon Gordon
 See accompanying commentary by Mantovani
- ▶ 3265 **IL-22 and inflammation: Leukin' through a glass onion**
Lauren A. Zenewicz and Richard A. Flavell

COMMENTARY

- ▶ 3269 **From phagocyte diversity and activation to probiotics: Back to Metchnikoff**
Alberto Mantovani
 See accompanying article by Gordon

FRONTLINE

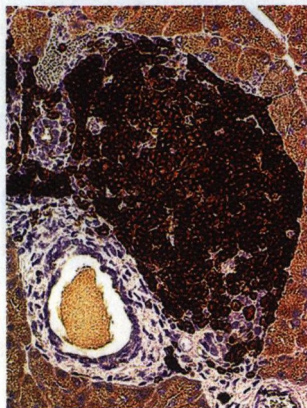
- ▶ 3274 **DC activated via dectin-1 convert Treg into IL-17 producers**
Fabiola Osorio, Salomé LeibundGut-Landmann, Matthias Lochner, Katharina Lahl, Tim Sparwasser, Gérard Eberl and Caetano Reis e Sousa

SHORT COMMUNICATION:

- ▶ 3282 **Inducible reprogramming of human T cells into Treg cells by a conditionally active form of FOXP3**
Sarah E. Allan, George X. Song-Zhao, Thomas Abraham, Alicia N. McMurchy and Megan K. Levings

Handwritten note: 3252/11/228

Cellular immune response



Immunoperoxidase staining of B220 in NOD mouse islets

- 3290** **FTY720 suppresses the development of colitis in lymphoid-null mice by modulating the trafficking of colitogenic CD4⁺ T cells in bone marrow**
 Toshimitsu Fujii, Takayuki Tomita, Takanori Kanai, Yasuhiro Nemoto, Teruji Totsuka, Naoya Sakamoto, Tetsuya Nakamura, Kiichiro Tsuchiya, Ryuichi Okamoto and Mamoru Watanabe



Supporting Information available online

- 3304** **In situ imaging reveals different responses by naïve and memory CD8 T cells to late antigen presentation by lymph node DC after influenza virus infection**

Kamal M. Khanna, Carolina C. Aguila, Jason M. Redman, Jenny E. Suarez-Ramirez, Leo Lefrançois and Linda S. Cauley

- 3316** **B and CD4⁺ T-cell expression of TLR2 is critical for optimal induction of a T-cell-dependent humoral immune response to intact *Streptococcus pneumoniae***

Sam Vasilevsky, Gouri Chattopadhyay, Jesus Colino, Tze-Jou Yeh, Quanyi Chen, Goutam Sen and Clifford M. Snapper

- 3327** **Human IgA-secreting cells induced by intestinal, but not systemic, immunization respond to CCL25 (TECK) and CCL28 (MEC)**

Patrik Sundström, Samuel B. Lundin, Lars-Åke Nilsson and Marianne Quiding-Järbrink

- 3339** **Availability of autoantigenic epitopes controls phenotype, severity, and penetrance in TCR Tg autoimmune gastritis**

Ditza Levin, Richard J. DiPaolo, Carine Brinster, Maria Jamela R. Revilla, Lisa F. Boyd, Luc Teyton, Kannan Natarajan, Michael G. Mage, Ethan M. Shevach and David H. Margulies



Supporting Information available online

- 3354** **Interaction of KLRG1 with E-cadherin: New functional and structural insights**

Stephan Rosshart, Maike Hofmann, Oliver Schweier, Anne-Kathrin Pfaff, Keiko Yoshimoto, Tsutomu Takeuchi, Eszter Molnar, Wolfgang W. Schamel and Hanspeter Pircher

Immunity to infection

- 3365** **Differential signaling of cmvIL-10 through common variants of the IL-10 receptor 1**

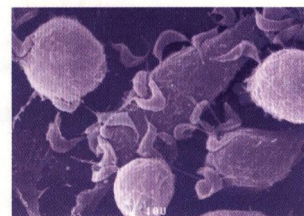
Sabine G. Gruber, Maria Gloria Luciani, Paul Grundtner, Alexander Zdanov and Christoph Gasche

- 3376** **CXCR3-deficiency protects influenza-infected CCR5-deficient mice from mortality**

Shaza A. Fadel, Shannon K. Bromley, Benjamin D. Medoff and Andrew D. Luster



Supporting Information available online



Invasion of a dendritic cell by *Trypanosoma cruzi*

SHORT COMMUNICATION:

- 3388 **In vivo conversion of BM plasmacytoid DC into CD11b⁺ conventional DC during virus infection**

Li-Ying Liou, Amanda L. Blasius, Megan J. Welch, Marco Colonna, Michael B. A. Oldstone and Elina I. Zuniga

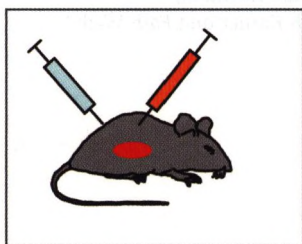


Supporting Information available online

- 3395 **The elimination of *Anaplasma phagocytophilum* requires CD4⁺ T cells, but is independent of Th1 cytokines and a wide spectrum of effector mechanisms**

Katharina Birkner, Birte Steiner, Christina Rinkler, Yvonne Kern, Peter Aichele, Christian Bogdan and Friederike D. von Loewenich

Immunomodulation



Systemic antitumor therapy

- 3411 **Resident enteric microbiota and CD8⁺ T cells shape the abundance of marginal zone B cells**

Bo Wei, Thomas T. Su, Harnisha Dalwadi, Robert P. Stephan, Daisuke Fujiwara, Tiffany T. Huang, Sarah Brewer, Lindy Chen, Moshe Arditi, James Borneman, David J. Rawlings and Jonathan Braun



Supporting Information available online



- 3426 **CD25⁺ T cells induce *Helicobacter pylori*-specific CD25⁻ T-cell anergy but are not required to maintain persistent hyporesponsiveness**

Kathleen A. Stuller, Hua Ding, Raymond W. Redline, Steven J. Czinn and Thomas G. Blanchard

- 3436 **TLR3 modulates immunopathology during a *Schistosoma mansoni* egg-driven Th2 response in the lung**

Amrita D. Joshi, Matthew A. Schaller, Nicholas W. Lukacs, Steven L. Kunkel and Cory M. Hogaboam

- 3450 **APRIL (TNFSF13) regulates collagen-induced arthritis, IL-17 production and Th2 response**

Yanping Xiao, Seiichi Motomura and Eckhard R. Podack

- 3459 **LILRA5 is expressed by synovial tissue macrophages in rheumatoid arthritis, selectively induces pro-inflammatory cytokines and IL-10 and is regulated by TNF- α , IL-10 and IFN- γ**

Ainslie Mitchell, Carles Rentero, Yasumi Endoh, Kenneth Hsu, Katharina Gaus, Carolyn Geczy, H. Patrick McNeil, Luis Borges and Nicodemus Tedla

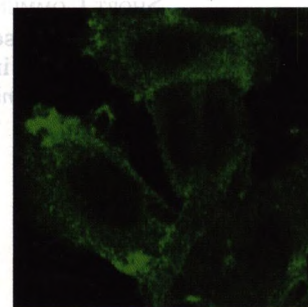
Innate immunity

- 3474 **Autologous and allogeneic HLA KIR ligand environments and activating KIR control KIR NK-cell functions**

Maelig Morvan, Gaëlle David, Véronique Sébille, Aurore Perrin, Katia Gagne, Catherine Willem, Nolwenn Kerdudou, Laure Denis, Béatrice Clémenceau, Gilles Folléa, Jean-Denis Bignon and Christelle Retière



Supporting Information available online



VAP-1 expression on permeabilized CHO cells

■ 3487 **Viral 5'-triphosphate RNA and non-CpG DNA aggravate autoimmunity and lupus nephritis via distinct TLR-independent immune responses**

Ramanjaneyulu Allam, Rahul D. Pawar, Onkar P. Kulkarni, Veit Hornung, Gunter Hartmann, Stephan Segerer, Shizuo Akira, Stefan Endres and Hans-Joachim Anders

■ 3499 **Endothelial Src kinase regulates membrane recycling from the lateral border recycling compartment during leukocyte transendothelial migration**

Bidisha Dasgupta and William A. Muller



Demyelinating MOG epitopes

Molecular immunology

■ 3508 **Rel/NF- κ B family member RelA regulates NK1.1⁻ to NK1.1⁺ transition as well as IL-15-induced expansion of NKT cells**

Sivakumar Vallabhapurapu, Iwona Powolny-Budnicka, Marc Riemann, Roland M. Schmid, Stephan Paxian, Klaus Pfeffer, Heinrich Körner and Falk Weih



Leukocyte signaling

■ 3520 **TCR- β chains derived from peripheral $\gamma\delta$ T cells can take part in $\alpha\beta$ T-cell development**

Nabil Bosco, Corinne Engdahl, Angéle Bénard, Johanna Rolink, Rhodri Ceredig and Antonius G. Rolink



Supporting Information available online

■ 3530 **Impaired T-cell development in the absence of Vav1 and Itk**

Julia Raberger, Nicole Boucheron, Shinya Sakaguchi, Josef M. Penninger and Wilfried Ellmeier

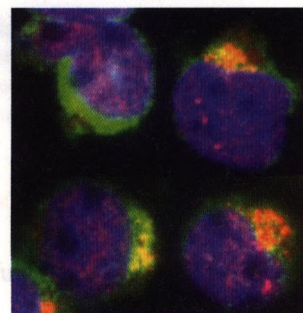


Supporting Information available online

SHORT COMMUNICATION:

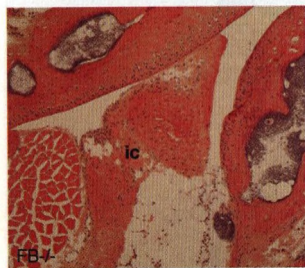
■ 3543 **B-cell responses to B-cell activation factor of the TNF family (BAFF) are impaired in the absence of PI3K delta**

Thomas Henley, Dorottya Kovesdi and Martin Turner



cytC and Bax staining of β cells

Clinical immunology



Histopathology of the knee joint

- 3549 Comprehensive analysis of HIV Gag-specific IFN- γ response in HIV-1- and HIV-2-infected asymptomatic patients from a clinical cohort in The Gambia**

Beatrice O. Ondondo, Sarah L. Rowland-Jones, Lucy Dorrell, Kevin Peterson, Matthew Cotten, Hilton Whittle and Assan Jaye



Supporting Information available online

- 3561 Endogenous humoral autoreactive immune responses to apoptotic cells: Effects on phagocytic uptake, chemotactic migration and antigenic spread**

Joy Das, Pooja Arora, Donald Gracias, Alagangula Praveen, Beena P. J. Raj, Elishba Martin and Rahul Pal

- 3575 Acknowledgements**

- 3576 Impressum**

- I Index**