

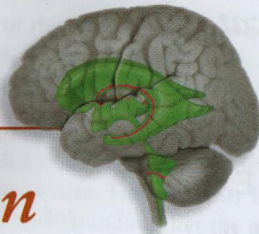
# Contents

Preface .....	xii
Acknowledgments .....	xiii
About the Digital Companion .....	xiii

## PART I

### Introduction

<b>Overview .....</b>	<b>4</b>
<b>The Nervous System .....</b>	<b>5</b>
Cells .....	5
Gray Matter/White Matter .....	5
Connections .....	7
CNS/PNS .....	7
Constitution of the CNS .....	7
Principal Divisions of the Brain .....	8
Cranial Nerves and Spinal Segments .....	8
Cerebrospinal Fluid and Its Circulation .....	9
Cortical Areas .....	10
<b>Using this Book .....</b>	<b>10</b>
Terminology .....	10
Terms of Relation—The Special Case of the Human Head .....	12
Labels .....	12
Image Groups .....	13
Pathways .....	14
Navigation .....	14
<b>Materials and Methods .....</b>	<b>14</b>
Subjects .....	14
Brain Specimens .....	15
Radiological Imaging .....	16
<b>References .....</b>	<b>17</b>



## PART II

### The CNS and Its Blood Vessels



<b>Brain .....</b>	<b>20</b>
Cerebral Hemisphere and Brain Stem; Sulci and Gyri—Lateral Aspect .....	20
Cerebral Hemisphere and Brain Stem Arteries; Arteries of the Insula and Lateral Sulcus; Arterial Territories—Lateral Aspect .....	22
Cerebral Hemisphere and Brain Stem; Sulci and Gyri—Mesial Aspect .....	24
Cerebral Hemisphere and Brain Stem Arteries; Arterial Territories— Mesial Aspect .....	26
Cerebral Hemisphere and Brain Stem Arteries; by Conventional Angiography; by MRA— Lateral Projection .....	28
Dural Venous Sinuses and Folds (Diagrammatic); by Conventional Angiography; by MRV—Lateral Projection .....	30
Cerebral Hemispheres, Brain Stem, and Arteries; by MRA—Anterior Aspect .....	32
Cerebral Hemisphere and Brain Stem Arteries and Veins by Conventional Angiography and Veins by MRV— Posteroanterior Projections .....	34

Cerebral Hemispheres and Brain Stem; Sulci and Gyri—Inferior Aspect ..... 36

Cerebral Hemispheres and Brain Stem: Arteries and Cranial Nerves; Arterial Territories; Axial MRA—Inferior Aspect ..... 38

**Brain Stem ..... 40**

Brain Stem, Diencephalon, Basal Ganglia, and Cerebellum—Anterolateral Aspect ..... 40

Brain Stem, Diencephalon, Basal Ganglia, and Cerebellum; Arteries and Cranial Nerves—Anterolateral Aspect ..... 41

Brain Stem, Diencephalon, Basal Ganglia, and Cerebellum; Arterial Territories—Anterolateral Aspect ..... 42

Brain Stem, Thalamus, and Striatum—Anterior Aspect ..... 43

Brain Stem, Thalamus, and Striatum—Posterior Aspect ..... 44

Brain Stem, Thalamus, and Striatum—Lateral Aspect ..... 45

**Cerebellum ..... 46**

Cerebellum—Superior Surface ..... 46

Cerebellum—Inferior Surface ..... 47

**Spinal Cord ..... 48**

Arteries to Spinal Cord (Diagrammatic) ..... 48

Segmental Arterial Supply of Spinal Cord (Diagrammatic) ..... 49

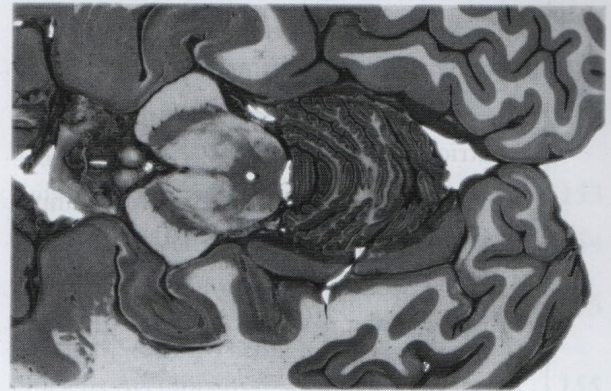
**Fiber Bundles ..... 50**

Principal Fiber Bundles in Cerebral Hemisphere and Brain Stem (Semi-Schematic)—Lateral and Mesial Aspects ..... 50

Principal Fiber Bundles in Coronal, Axial, and Sagittal Brain Sections (Semi-Schematic) ..... 51

**PART III**

*Brain Slices*



**Coronal Sections ..... 54**

Coronal Section Through Rostral Wall of Lateral Ventricle with Vessel Territories ..... 54

Coronal Section Through Anterior Limit of Putamen with MRI ..... 56

Coronal Section Through Head of Caudate Nucleus and Putamen with MRI ..... 58

Coronal Section Through Anterior Limit of Amygdala with Vessel Territories ..... 60

Coronal Section Through Tuber Cinereum with MRI ..... 62

Coronal Section Through Interventricular Foramen (Foramen of *Monro*) with Vessel Territories ..... 64

Coronal Section Through Anterior Nucleus of Thalamus with MRI ..... 66

Coronal Section Through Mamillothalamic Tract (Fasciculus) with Vessel Territories ..... 68

Coronal Section Through Mamillary Bodies with MRI ..... 70

Coronal Section Through Subthalamic Nucleus with Vessel Territories ..... 72

Coronal Section Through Posterior Limit of Interpeduncular Fossa with MRI ..... 74

Coronal Section Through Posterior Commissure with Vessel Territories .....	76
Coronal Section Through Commissure of Superior Colliculi with MRI.....	78
Coronal Section Through Quadrigeminal Plate with Vessel Territories .....	80
Coronal Section Through Fourth Ventricle (IV) with MRI.....	82
Coronal Section Through Posterior Limit of Hippocampus with Vessel Territories .....	84
Coronal Section Through Posterior Horns of Lateral Ventricles with MRI.....	86
<b>Sagittal Sections.....</b>	<b>88</b>
Sagittal Section Through Superior, Middle, and Inferior Temporal Gyri with Vessel Territories .....	88
Sagittal Section Through Insula with MRI .....	90
Sagittal Section Through Claustrum and Lateral Putamen with Vessel Territories.....	92
Sagittal Section Through Lateral Putamen with MRI .....	94
Sagittal Section Through Termination of Optic Tract with MRI.....	96
Sagittal Section Through Pulvinar with Vessel Territories .....	98
Sagittal Section Through Ambient Cistern with MRI.....	100
Sagittal Section Through Olfactory Tract with Vessel Territories.....	102
Sagittal Section Through Inferior Cerebellar Peduncle (Restiform Body) with Vessel Territories.....	104
Sagittal Section Through Superior Cerebellar Peduncle (Brachium Conjunctivum) with MRI .....	106
Sagittal Section Through Red Nucleus with Vessel Territories.....	108

Sagittal Section Through Cerebral Aqueduct (Aqueduct of <i>Sylvius</i> ) with MRI ...	110
---	-----

**Axial Sections .....** **112**

Axial Section Through Superior Caudate Nucleus with MRI .....	112
Axial Section Through Inferior Corpus Callosum with Vessel Territories .....	114
Axial Section Through Superior Putamen with MRI .....	116
Axial Section Through Putamen with Vessel Territories.....	118
Axial Section Through Frontoparietal Opercula with MRI.....	120
Axial Section Through Midlevel Diencephalon with Vessel Territories .....	122
Axial Section Through Anterior Commissure with MRI.....	124
Axial Section Through Habenular Commissure with Vessel Territories .....	126
Axial Section Through Superior Colliculi with MRI.....	128
Axial Section Through Anterior Perforated Substance with Vessel Territories.....	130
Axial Section Through Inferior Colliculi with MRI.....	132



**PART IV**

***Histological Sections***

**Cerebellum** ..... 136

Horizontal Section Through Fastigial Nucleus with Vessel Territories ..... 136

Horizontal Section Through Dentate Nucleus with MRI ..... 137

**Brain Stem** ..... 138

Transverse Section Through Superior Colliculus with Vessel Territories ..... 138

Transverse Section Through Oculomotor Nucleus with MRI ..... 139

Transverse Section Through Inferior Colliculus with Vessel Territories ..... 140

Transverse Section Through Superior Pons and Isthmus with MRI ..... 141

Transverse Section Through Middle Pons with Vessel Territories ..... 142

Transverse Section Through Facial Genu with MRI ..... 143

Transverse Section Through Vestibulocochlear Nerve Root with Vessel Territories ..... 144

Transverse Section Through Glossopharyngeal Nerve Root with MRI ..... 145

Transverse Section Through Fourth Ventricle with Vessel Territories ..... 146

Transverse Section Through Hypoglossal Nucleus with MRI ..... 147

Transverse Section Through Inferior Olive with Vessel Territories ..... 148

Transverse Section Through Decussation of Pyramids with MRI ..... 149

**Spinal Cord** ..... 150

Transverse Section Through Upper Cervical Level with Vessel Territories ..... 150

Transverse Section Through Cervical Enlargement with MRI ..... 151

Transverse Section Through Thoracic Level with Vessel Territories ..... 152

Transverse Section Through Lumbar Enlargement with Vessel Territories ..... 153

Transverse Section Through Sacral Level ..... 154

**Basal Ganglia and Thalamus** ..... 155

Coronal Section Through Nucleus Accumbens ..... 155

Coronal Section Through Optic Chiasm ..... 156

Coronal Section Through Anterior Commissure ..... 157

Coronal Section Through Anterior Thalamic Tubercle ..... 158

Coronal Section Through Mamillothalamic Tract ..... 159

Coronal Section Through H Fields of *Forel*... 160

Coronal Section Through Dorsal Lateral Geniculate Nucleus ..... 161

Coronal Section Through Pulvinar ..... 162

**Hypothalamus** ..... 163

Coronal Section Through Optic Chiasm; Coronal Section Through Pituitary Stalk ..... 163

Coronal Section Through Interthalamic Adhesion; Coronal Section Through Mamillary Bodies ..... 164

**Basal Forebrain** ..... 165

Coronal Section Through Olfactory Trigone and Nucleus Basalis ..... 165

**Hippocampus** ..... 166

Coronal Section Through Body of Hippocampus ..... 166



## PART V

# Pathways

<b>Brain Stem</b> .....	<b>170</b>
General Organization of Spinal Cord	
Gray Matter .....	170
General Organization of Cranial Nerve	
Gray Matter .....	172
Sensory Cranial Nerves and Nuclei .....	174
Motor Cranial Nerves and Nuclei .....	175
Organization of Cranial Nerve Nuclei into	
Columns—Posterior Aspect .....	176
Organization of Cranial Nerve Nuclei into	
Columns—Anterior Aspect .....	177
<b>Thalamus</b> .....	<b>178</b>
Organization of the Thalamus .....	178
<b>Hypothalamus</b> .....	<b>180</b>
Organization of the Hypothalamus .....	180
<b>Sensory Systems</b> .....	<b>182</b>
Touch and Position Sense Pathways: Posterior	
(Dorsal) Column/Medial Lemniscus and	
Trigeminal Main Sensory Nucleus .....	182
Touch Pathways: Anterior and Lateral	
Spinothalamic Tracts and Trigeminal	
Spinal Nucleus .....	184
Pain Pathways .....	186
Touch Pathways: Head and Face .....	188
Taste Pathways .....	190
Visual Pathways .....	192
Olfactory Pathways .....	194
Auditory Pathways .....	196

<b>Sensory/Motor Systems</b> .....	<b>198</b>
Vestibular Pathways .....	198
<b>Motor Systems</b> .....	<b>200</b>
Corticospinal (Pyramidal) and	
Corticobulbar Pathways .....	200
Rubrospinal and Tectospinal Pathways .....	202
Reticulospinal Pathways .....	204
<b>Cerebellum</b> .....	<b>206</b>
Cerebellar Pathways: Somatic Afferents .....	206
Cerebellar Pathways: Afferents	
(Non-Somatic) .....	208
Cerebellar Pathways: Efferents .....	210
<b>Basal Ganglia</b> .....	<b>212</b>
Basal Ganglia Pathways .....	212
<b>Hippocampus</b> .....	<b>214</b>
Hippocampal Pathways: Afferents .....	214
Hippocampal Pathways: Efferents .....	216
<b>Amygdala</b> .....	<b>218</b>
Amygdalar Pathways: Afferents .....	218
Amygdalar Pathways: Efferents .....	220
<b>Hypothalamus</b> .....	<b>222</b>
Hypothalamic Pathways: Afferents .....	222
Hypothalamic Pathways: Efferents .....	224
Arousal and Sleep Pathways .....	226
Hunger and Feeding Pathways .....	228
Circumventricular Organs .....	230
<b>Autonomic Systems</b> .....	<b>232</b>
Autonomic Pathways: Afferents .....	232
Autonomic Pathways: Sympathetic	
Efferents .....	234
Autonomic Pathways: Parasympathetic	
Efferents .....	236
<b>Modulatory Systems</b> .....	<b>238</b>
Cholinergic and Dopaminergic Pathways .....	238
Noradrenergic and Serotonergic	
Pathways .....	240
<b>Index</b> .....	<b>243</b>