

**regulars**

**Cover Story**

Details of how work is progressing on phase II of the Lesotho Highlands Water Project

**5 World News**

Kidston pumped storage project moves forward in Australia, Flagship tidal energy project gets green light

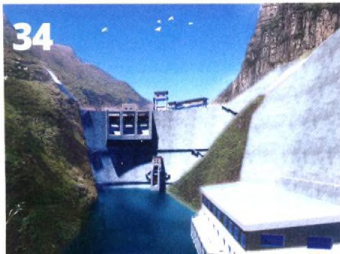
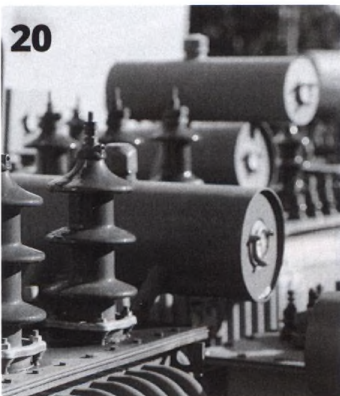
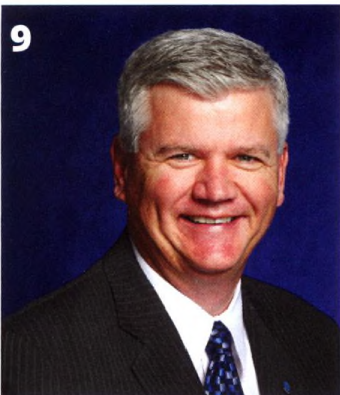
**10 Spotlight**

An insight into the interesting life of a civil engineer in the hydropower industry

**45 Classified**

**50 Contacts**

**features**



**Interview**

**9 Reaching the pinnacle**  
Newly elected ICOLD President Michael Rogers speaks with IWP&DC about his recent appointment

**Spotlight**

**12 An unexpected journey to Nepal**  
Florian Höllerhage of Lahmeyer provides an insight into the interesting life of a civil engineer

**Safety**

**14 Taking safety seriously**  
The importance of global dam safety initiatives as investigations into the recent failure in Laos continue

**18 Sound advice**  
Steps that can be taken to help mitigate excessive noise in the dam construction and hydroelectricity industries

**20 The importance of being modern**  
Jess Yenter, project leader at Eaton, discusses power system modernization

**Large dams**

**23 River renewal**  
Mark Bransom of KRRC gives an update on the largest dam removal project in US history

**26 Tall order in Turkey**  
Details on the five tallest dams in operation in Turkey

**Machinery**

**28 Rise of the machines**  
The latest news and developments concerning machinery in the hydropower and dams industry

**32 Robotic tunnelling**  
How remote-controlled machines can help improve tunneling safety

**New technology**

**34 Reducing design defect**  
China Water Resources Pearl River Planning reduced design defect rate by 85% on the Wugachong Reservoir Project, using technology from Bentley

**Project development**

**36 The second phase**  
Details on the Lesotho Highlands Water Project, and an update on how work is progressing on phase II of the scheme

**41 Optimization of run-of-river hydropower plant capacity**

A new study presents a mathematical model used to determine the design discharge, installed capacity and number of turbines for optimal configuration of run-of-river hydropower plants, based on the optimal operational rule