

Table of Contents



Section 1:

Trauma

CHAPTER 1: Trauma Overview . . .	5
<i>Anne G. Osborn, MD, FACR</i>	
CHAPTER 2: Primary Effects of CNS Trauma	13
<i>Anne G. Osborn, MD, FACR and Gary L. Hedlund, DO</i>	
CHAPTER 3: Secondary Effects and Sequelae of CNS Trauma . .	65
<i>Anne G. Osborn, MD, FACR</i>	



Section 2:

Nontraumatic Hemorrhage and Vascular Lesions

CHAPTER 4: Approach to Nontraumatic Hemorrhage and Vascular Lesions	93
<i>Anne G. Osborn, MD, FACR</i>	
CHAPTER 5: Spontaneous Parenchymal Hemorrhage	103
<i>Anne G. Osborn, MD, FACR</i>	
CHAPTER 6: Subarachnoid Hemorrhage and Aneurysms . .	123
<i>Anne G. Osborn, MD, FACR</i>	
CHAPTER 7: Vascular Malformations	155
<i>Anne G. Osborn, MD, FACR</i>	
CHAPTER 8: Arterial Anatomy and Strokes	197
<i>Anne G. Osborn, MD, FACR and Gary L. Hedlund, DO</i>	
CHAPTER 9: Venous Anatomy and Occlusions	253
<i>Anne G. Osborn, MD, FACR</i>	
CHAPTER 10: Vasculopathy	277
<i>Anne G. Osborn, MD, FACR</i>	



Section 3:

Infection, Inflammation, and Demyelinating Diseases

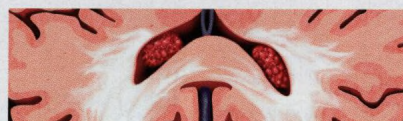
CHAPTER 11: Approach to Infection, Inflammation, and Demyelination	327
<i>Anne G. Osborn, MD, FACR</i>	
CHAPTER 12: Congenital, Acquired Pyogenic, and Acquired Viral Infections	331
<i>Anne G. Osborn, MD, FACR and Gary L. Hedlund, DO</i>	
CHAPTER 13: Tuberculosis and Fungal, Parasitic, and Other Infections	377
<i>Anne G. Osborn, MD, FACR</i>	
CHAPTER 14: HIV/AIDS	417
<i>Anne G. Osborn, MD, FACR</i>	
CHAPTER 15: Demyelinating and Inflammatory Diseases	449
<i>Anne G. Osborn, MD, FACR</i>	



Section 4:

Neoplasms, Cysts, and Tumor-Like Lesions

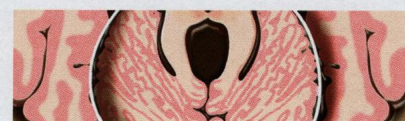
- CHAPTER 16: Introduction to Neoplasms, Cysts, and Tumor-Like Lesions** 497
Anne G. Osborn, MD, FACR
- CHAPTER 17: Astrocytomas** ... 509
Anne G. Osborn, MD, FACR
- CHAPTER 18: Nonastrocytic Glial Neoplasms** 553
Anne G. Osborn, MD, FACR
- CHAPTER 19: Neuronal and Glioneuronal Tumors** 583
Anne G. Osborn, MD, FACR
- CHAPTER 20: Pineal and Germ Cell Tumors** 607
Anne G. Osborn, MD, FACR
- CHAPTER 21: Embryonal Neoplasms** 635
Anne G. Osborn, MD, FACR
- CHAPTER 22: Tumors of the Meninges** 659
Anne G. Osborn, MD, FACR
- CHAPTER 23: Cranial Nerves and Nerve Sheath Tumors** 695
Anne G. Osborn, MD, FACR
- CHAPTER 24: Lymphomas and Hematopoietic and Histiocytic Tumors** 731
Anne G. Osborn, MD, FACR
- CHAPTER 25: Sellar Neoplasms and Tumor-Like Lesions** 771
Karen L. Salzman, MD and Anne G. Osborn, MD, FACR
- CHAPTER 26: Miscellaneous Tumors and Tumor-Like Conditions** ... 819
Anne G. Osborn, MD, FACR
- CHAPTER 27: Metastases and Paraneoplastic Syndromes** ... 835
Anne G. Osborn, MD, FACR
- CHAPTER 28: Nonneoplastic Cysts** 867
Anne G. Osborn, MD, FACR



Section 5:

Toxic, Metabolic, Degenerative, and CSF Disorders

- CHAPTER 29: Approach to Toxic, Metabolic, Degenerative, and CSF Disorders** 905
Anne G. Osborn, MD, FACR
- CHAPTER 30: Toxic Encephalopathy** 919
Anne G. Osborn, MD, FACR
- CHAPTER 31: Inherited Metabolic Disorders** 949
Gary L. Hedlund, DO
- CHAPTER 32: Acquired Metabolic and Systemic Disorders** 1017
Anne G. Osborn, MD, FACR
- CHAPTER 33: Dementias and Brain Degenerations** 1071
Anne G. Osborn, MD, FACR
- CHAPTER 34: Hydrocephalus and CSF Disorders** 1119
Anne G. Osborn, MD, FACR and Gary L. Hedlund, DO



Section 6:

Congenital Malformations of the Skull and Brain

- CHAPTER 35: Embryology and Approach to Congenital Malformations** 1159
Anne G. Osborn, MD, FACR and Gary L. Hedlund, DO
- CHAPTER 36: Posterior Fossa Malformations** 1169
Anne G. Osborn, MD, FACR and Gary L. Hedlund, DO
- CHAPTER 37: Commissural and Cortical Maldevelopment** 1195
Anne G. Osborn, MD, FACR and Gary L. Hedlund, DO
- CHAPTER 38: Holoprosencephalies, Related Disorders, and Mimics** .. 1225
Anne G. Osborn, MD, FACR and Gary L. Hedlund, DO
- CHAPTER 39: Familial Cancer Predisposition Syndromes** 1241
Anne G. Osborn, MD, FACR and Gary L. Hedlund, DO
- CHAPTER 40: Vascular Neurocutaneous Syndromes** ... 1279
Anne G. Osborn, MD, FACR and Gary L. Hedlund, DO
- CHAPTER 41: Anomalies of the Skull and Meninges** 1295
Anne G. Osborn, MD, FACR and Gary L. Hedlund, DO