

Renée Fleming

Münchner Philharmoniker / Christian Thielemann (17-21)
Hartmut Höll piano (1-16)

Piano: Steingraeber & Söhne

JOHANNES BRAHMS 1833-1897

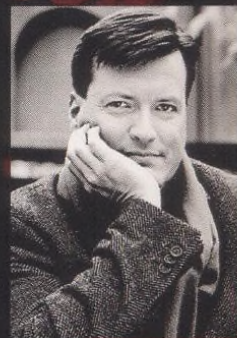
- | | | |
|---|-----------------------------------|------|
| 1 | Wiegenlied (Lullaby) op.49 no.4 | 2.05 |
| 2 | Ständchen op.106 no.1 | 1.38 |
| 3 | Lerchengesang op.70 no.2 | 2.49 |
| 4 | Mondnacht WoO 21 | 2.37 |
| 5 | Des Liebsten Schwur op.69 no.4 | 2.42 |
| 6 | Die Mainacht op.43 no.2 | 4.18 |
| 7 | Da unten im Tale WoO 33 no.6 | 2.20 |
| 8 | Vergebliches Ständchen op.84 no.4 | 1.49 |

ROBERT SCHUMANN 1810-1856

- | | | |
|------|------------------------------|-------|
| 9-16 | Frauenliebe und -leben op.42 | 23.12 |
|------|------------------------------|-------|

GUSTAV MAHLER 1860-1911

- | | | |
|-------|----------------|-------|
| 17-21 | Rückert-Lieder | 17.54 |
|-------|----------------|-------|



Christian Thielemann



Hartmut Höll

DECCA 90

DECCA

DECCA Regd. Trade Mark DECCA MUSIC GROUP LIMITED London, England.

A UNIVERSAL MUSIC COMPANY

Universal International Music BV, Gerrit van der Veenlaan 4, 3743 DN, Baarn, Netherlands

WWW.RENEEFLEMING.COM • WWW.DECCACLASSICS.COM

BHEM/SDRM STEREO This compilation © 2019 Decca Music Group Limited © 2019 Decca Music Group Limited.

Booklet enclosed. Mit Beiheft. Made in Germany. Total timing 60.24 DDD LC00171 483 2325 D/H

