

From the THÉÂTRE MUSICAL DE PARIS – CHÂTELET

Directeur Général: Jean-Pierre Brossmann

Administrateur Général: Jacques Hédouin



WARNER
CLASSICS

CHRISTOPH WILLIBALD GLUCK

Orphée et Eurydice

Gluck's tragedy of love lost, found and lost again has always lent itself to powerful and iconoclastic interpretations. Here we can see *Orphée et Eurydice* in a vital new light of authenticity and innovation at the hands of the Gluck specialist John Eliot Gardiner and the acclaimed American director Robert Wilson. Working with a star cast of some of the most eloquent singer-actors of our day, with Magdalena Kožená and Madeline Bender in the title roles, Wilson makes the most of the opera's balletic possibilities to embark on a mesmerising voyage into Hades, and into the very depths of the plight of the two ill-starred lovers.

Orphée MAGDALENA KOŽENÁ Eurydice MADELINE BENDER Amour PATRICIA PETIBON

ORCHESTRE RÉVOLUTIONNAIRE ET ROMANTIQUE · MONTEVERDI CHOIR

Conductor SIR JOHN ELIOT GARDINER · Choreographer GIUSEPPE FRIGENI

Stage Director ROBERT WILSON · Wardrobe FRIDA PARMEGGIANI

Lighting AJ WEISSBARD · Videotape Editor MICHEL CAMIER · Producer COLIN WILSON

Executive Producers: JACQUES HÉDOUIN (Théâtre Musical de Paris – Châtelet) · YVES ROLLAND (LGM)

JANE SEYMOUR (RM Associates) · Directed for Television & Video by BRIAN LARGE

An RM Associates / Bayerischer Rundfunk / France 3 / LGM / Mezzo / Radio France /
SBS TV Australia / Théâtre Musical de Paris – Châtelet co-production with
the support of Centre National de la Cinématographie

DVD design and development: Johannes Müller, msm-studios GmbH, München

DVD producer: Johannes Müller · Screen design: Hermann Enkemeier · Audio encoding: Sven Mevissen

Video encoding and DVD authoring: Markus Ammer & Jens Saure **mSurround**

mSurround Upmixing: Sven Mevissen · Surround Sound Facilities: msm-studios GmbH, München

Subtitles prepared by *texthouse*, Hamburg © 2008 Warner Classics, Warner Music UK Ltd.

A Warner Music Group Company.

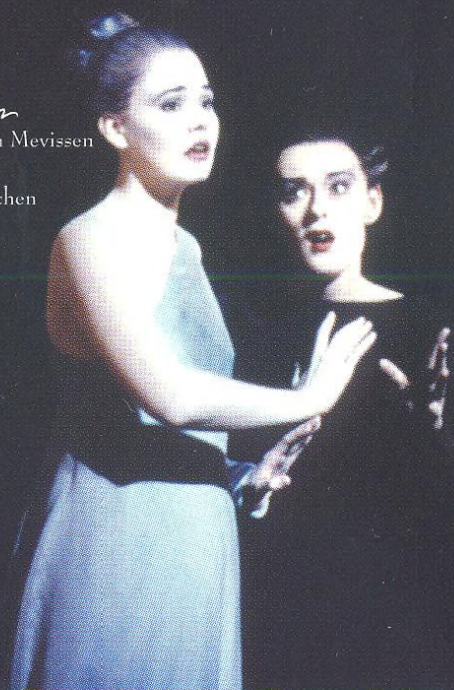
English: Peggy Cochrane © 1958 Decca Music Group Ltd, London

German: Reinhard Lütjhe

Packaging design: Darren Lewis for WLP Ltd.

© 2000 The copyright in this video recording is owned by RM Associates/
Théâtre Musical de Paris – Châtelet, exclusively licensed worldwide by DCD Rights to
Warner Classics, Warner Music UK Ltd. A Warner Music Group Company.

© 2008 Warner Classics, Warner Music UK Ltd. A Warner Music Group Company.



50999 2 16577 9 5 Manufactured and printed in the EU

Running time: approx. 100 mins · Colour · NTSC System: 16:9 widescreen

Disc Format: 1 x DVD-9 · Audio Content: LPCM stereo · DTS 5.0 surround sound

This is a region-free NTSC DVD, designed for playback on all NTSC and modern PAL-compatible systems worldwide

Subtitles: English · Deutsch · Français

WARNING: The copyright proprietors have licensed all elements and materials contained in these DVD discs for private home use only. Any unauthorised use including copying, editing, exhibiting, renting, hiring, lending, exchanging, public performance, diffusion, radio or television broadcasting or otherwise dealing with this programme or any part thereof is strictly prohibited.

www.warnerclassics.com

