

Contents

Volume 162 | Number 1406 | May 2020

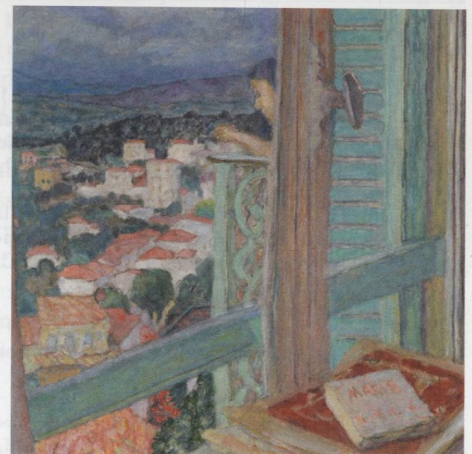


Books

- 454 *The Painter's Touch: Boucher, Chardin, Fragonard, E. Lajer-Burcharth*
by COLIN B. BAILEY
- 456 *Pleasure and Politics at the Court of France: The Artistic Patronage of Queen Marie of Brabant (1260–1321)*
T. Chapman Hamilton
by LINDY GRANT
- 456 *The History of Venetian Renaissance Sculpture (c.1400–1530), A. Markham Schulz*
by CATERINA FIORAVANTI
- 458 *The Pictorial Art of El Greco: Transmaterialities, Temporalities, and Media, L. Stoenescu*
by JOSÉ RIELLO
- 458 *The Print Collection of Cassiano dal Pozzo: Architecture, Topography and Military Maps (The Paper Museum of Cassiano dal Pozzo, Series C: Prints, Part 2), M. McDonald, ed.*
by JOSEPH CONNORS
- 460 *Becoming Property: Art, Theory, and Law in Early Modern France, K. Scott*
by ELENA COOPER
- 461 *Henri Vever Champion de l'Art nouveau*
W.Z. Silverman
by RICHARD WARREN
- 463 *Between Worlds: The Art of Bill Traylor*
L. Umberger
by ANNE MONAHAN
- 464 *Matisse and Decoration, J. Klein*
by KARL BUCHBERG
- 465 SHORT REVIEWS

Obituary

- 467 *Gillian Wilson (1941–2019)*
by REINIER BAARSEN
- 468 AMONG THIS MONTH'S CONTRIBUTORS



Editorial

- 371 Raphael and his cult

Articles

- 372 *Peregrinating Rome and Jerusalem in Enguerrand Quarton's 'Coronation of the Virgin'*
by ALEXANDRA GAJEWSKI
- 388 *An inventory of the art collection of Etienne-Nicolas Dutartre de Bourdonné, 1782*
by CHRISTOPHE HUCHET DE QUÉNÉTAÏN and MOANA WEIL-CURIEL
- 404 *The 'fortuna critica' of the 'Maiden of Lille'*
by LAURENCE RIVIALE
- 412 *New light on Pierre Bonnard's wife and model Marthe*
by LUCY WHELAN
- 420 *Picasso and the foundry of Emile Robecchi during the Second World War*
by CLARE FINN

Exhibitions

- 432 *Jean-Jacques Lequeu: Visionary Architect. Drawings from the Bibliothèque nationale de France*
by BARRY BERGDOLL
- 435 *Making the Renaissance Manuscript: Discoveries from Philadelphia Libraries*
by ROGER S. WIECK
- 437 *Mantegna: Making Antiquity Modern*
by ANTONIO MAZZOTTA
- 440 *Luca Giordano: From Nature to Painting*
by CATERINA VOLPI
- 443 *George Stubbs: The Man, The Horse, The Obsession*
by ALEX KIDSON
- 445 *Boston's Apollo: Thomas McKeller and John Singer Sargent*
by XAVIER F. SALOMON
- 448 *Fantastic Women: Surreal Worlds from Meret Oppenheim to Frida Kahlo*
by JENNIFER MUNDY
- 451 *The Avant-garde Networks of 'Amauta': Argentina, Mexico, and Peru in the 1920s*
by ANN REYNOLDS

Cover *Detail of Woman with dog (Mme Bonnard and her dog Ubu)*, by Pierre Bonnard. 1906. (p.415).
Above left *Detail of Coronation of the Virgin*, by Enguerrand Quarton. 1453–54. (p.375).
Left *Detail of Allegory to the farmers*, by Carlos Quípez Asín. 1928. (p.452).
Right *Detail of The window*, by Pierre Bonnard. 1925. (p.416).

