

# WENCESLAS SQUARE

## The Masonic Arboretum 14

- 1 The Royal Vineyards  
Muzeum

## Spiritual Leaders in Prague 16

- 2 45 Wenceslas Square / Václavské náměstí  
Hotel Jalta

## The Italia Zeppelin 18

- 3 42 Wenceslas Square / Václavské náměstí  
The Bank House

## The Grand Architect's Journeymen 20

- 4 61 Štěpánská  
Lucerna Palace

## The Mystery of a Shape 22

- 5 41 Vodičkova  
Ligna Palace

## The Mystery in Stone 24

- 6 9 Vodičkova  
Matthias Bernard Braun's House

## The Shining Light of Reason 26

- 7 7 Politických vězňů  
Breda Palace

## Alfons Mucha 28

- 8 7 Panská  
Kaunic Palace

## Freemasons for Czechoslovakia 30

- 9 14 Nekázanka  
The Stastny's / The Little Cross

## The Three Riders 32

- 10 28 Senovážné Square / Senovážné náměstí  
The Three Riders

## Attack on Hitler's Astral Body 34

- 11 7 Wenceslas Square / Václavské náměstí  
Ambassador / Zlatá Husa

## Rudolph II's Rosicrucian Physician 36

- 12 15 28. října  
The Golden Hive

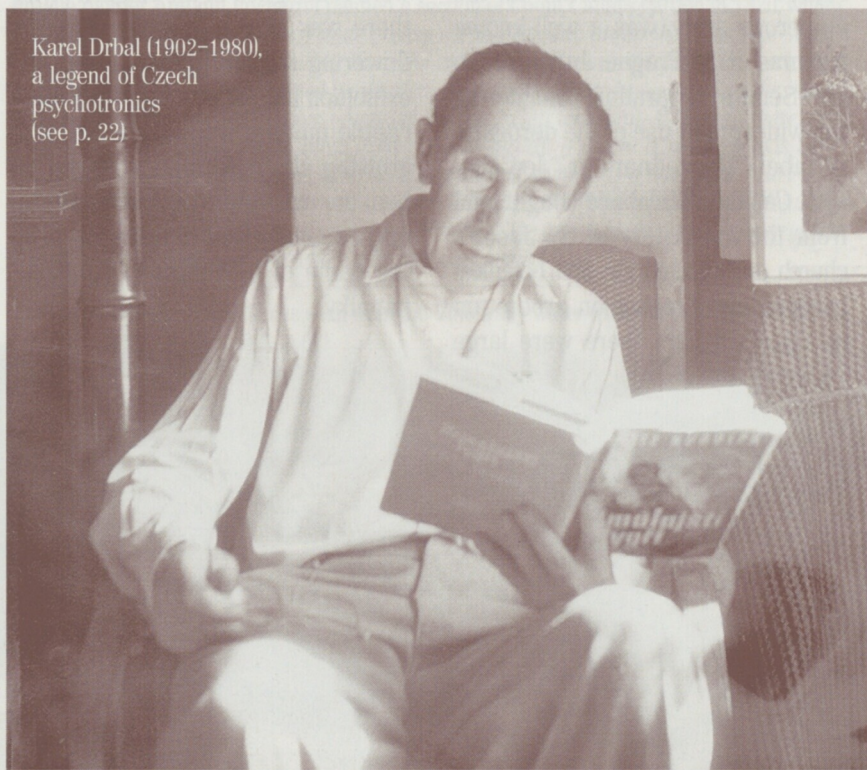
## The Shroud of Turin 38

- 13 16 Na příkopě  
Church of St. Cross

## Time of the Cathedrals 40

- 14 18 Jungmann Square / Jungmannovo nám.  
Church of Our Lady of the Snows

Karel Drbal (1902–1980),  
a legend of Czech  
psychotronics  
(see p. 22)



# NÁRODNÍ TŘÍDA (NATIONAL STREET)

**The Rare Magnet** 44

**15** 40 Národní  
Thun Palace

**Witness to a Poltergeist** 46

**16** 38 Národní  
The Porges of Portheim Palace

**The Threshold of Anthroposophy** 48

**17** 22 Národní  
Café Louvre

**The Angel of the West Window** 50

**18** 10 Národní  
Schwerts-Wallis Palace

**The Elite in Prague** 52

**19** 9 Národní  
Topic's House

**Freemasonry and Science** 54

**20** 3 Národní  
Academy of Sciences

**Visits of the Avon Swan** 56

**21** 2 Národní  
National Theatre

**The Secret of the Solstice** 58

**22** 6 Konviktská  
Rotunda of the Holy Rood

**Spiritism** 60

**23** 17 Konviktská  
The Two Hedgehogs / At the Nessatek's

**Elizabeth's Merlin** 62

**24** 11 Betlémské náměstí  
The White Stork

**The Prometheus of Masonry** 64

**25** 1 Betlémské náměstí  
The Halanek's / The Naprstek Museum

**The Mysterious Teacher** 66

**26** Betlémské náměstí  
The Bethlehem Seminary

**Jan Hus** 68

**27** 3 Betlémské náměstí  
Bethlehem Chapel

**A Prophet for the 21st century** 70

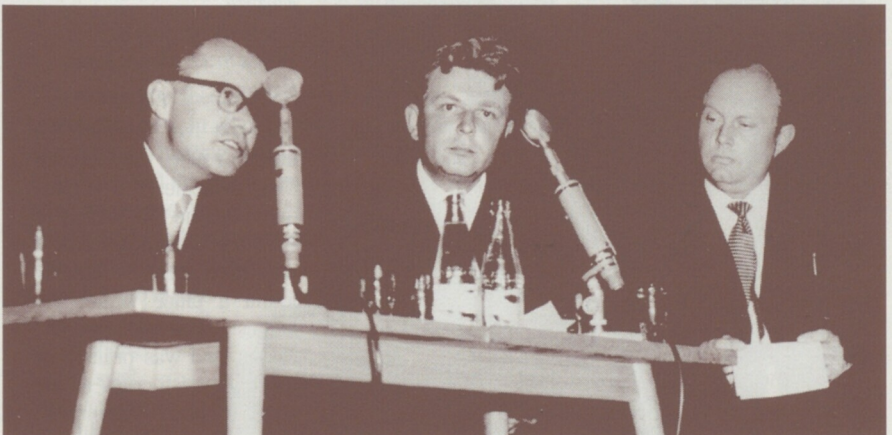
**28** 5 Husova  
University of Technics

**History Repeats Itself** 72

**29** 9 Husova  
Jesuit Courtyard

**... quod fecit Sendivogius** 74

**30** 9 Uhelný trh  
The Three Quills / The Wolf's Gullet



A legendary trio of Czech psychotronic and hermetic experts, in a unique photograph from 1965. From left Milan Ryzl (see p. 53), Zdenek Rejda (see p. 47 and 62) and Milan Nakonceny.

# OLD TOWN SQUARE

- |           |  |     |           |  |     |
|-----------|--|-----|-----------|--|-----|
| <b>31</b> | <b>The Custodians at the Gate</b><br>27 Rytířská / 1 Melantrichova<br>The Two Red Lions                  | 78  | <b>44</b> | <b>The Magic Era of Rings</b><br>6 Týnská<br>The Golden Ring   | 104 |
| <b>32</b> | <b>Don Giovanni: N° 4 = Death</b><br>Ovocný trh / Rytířská<br>The Estates Theatre                        | 80  | <b>45</b> | <b>The Rosicrucian Light-bearer</b><br>7 Týnská<br>Budovec's House                                   | 106 |
| <b>33</b> | <b>The Famous European Heretic</b><br>9 Železná / 2 Kamzíkova<br>Charles University Lecturer's Residence | 82  |           | <b>In the Shadow of Cathedrals</b>   | 108 |
| <b>34</b> | <b>Jack-in-the-Green</b><br>9 Železná / 1 Ovocný trh<br>The Carolinum                                    | 84  | <b>46</b> | <b>Witnesses of Time</b><br>14 Staroměstské náměstí<br>The Church of Our Lady Before Tyn             | 110 |
| <b>35</b> | <b>Connecting the Soul with God</b><br>3 Ovocný trh<br>The Carolinum                                     | 86  | <b>47</b> | <b>Opus Magnum</b><br>13 Staroměstské náměstí<br>The Stone Bell                                      | 112 |
| <b>36</b> | <b>A Visionary at Rudolph II's Court</b><br>8 Ovocný trh<br>The Red Heart                                | 88  | <b>48</b> | <b>The Prophecies of Nostradamus</b><br>Staroměstské náměstí<br>Prague Meridian                      | 114 |
| <b>37</b> | <b>The Black Madonna</b><br>34 Celetná / 19 Ovocný trh<br>The Black Madonna                              | 90  | <b>49</b> | <b>A Ray of Independent Light</b><br>17 OStaroměstské náměstí<br>The Unicorn                         | 116 |
| <b>38</b> | <b>Mozart's Swan Song</b><br>31 Celetná / 2 Rybná<br>Pacht Palace  | 92  | <b>50</b> | <b>The Turning Point</b><br>1 Staroměstské náměstí<br>The Old Town Hall                              | 118 |
| <b>39</b> | <b>The Secret of the Holy Blood</b><br>1/2 Templová<br>In the Temple                                     | 94  | <b>51</b> | <b>Prague's Astronomical Clock</b><br>1 Staroměstské náměstí<br>The Old Town Hall                    | 120 |
| <b>40</b> | <b>Bernardo Bolzano</b><br>25 Celetná<br>The Four Columns  | 96  | <b>52</b> | <b>The Emperor's Curse</b><br>18 Melantrichova<br>The Silver Jug                                     | 122 |
| <b>41</b> | <b>The Gift of the Black Art</b><br>32 Celetná<br>The Golden Lion  | 98  | <b>53</b> | <b>Voynich's Manuscript</b><br>12 Melantrichova<br>The Green Linden                                  | 124 |
| <b>42</b> | <b>Emanuel Swedenborg</b><br>7 Štupartská / 1 Malá Štupartská<br>Hotel Ungelt                            | 100 | <b>54</b> | <b>Medicine for Kings and Presidents</b><br>12/13 Malé náměstí<br>The Golden Lily / The Golden Eagle | 126 |
| <b>43</b> | <b>The Echo of Four Hammers</b><br>6 Malá Štupartská<br>Minorite Monastery / The Church of St. James     | 102 |           |  |     |

# JEWISH QUARTER

**Sons and Daughters  
of the Tree of Life** 130

**Kafka's Fateful Meeting** 132

**55** 9 Mikulášská  
The Prelature of St. Nicholas

**Calvary of the "Lamb Killers"** 134

**56** 18 Maislova  
Jewish Town Hall

**It's a Trap...** 136

**57** Červená  
The Old-New Synagogue

**May God Lengthen His Days...** 138

**58** The Jewish Cemetery  
The Resting Place of Rabbi Löw

**Mordechai Martin Buber** 140

**59** At the Old Cemetery  
Jewish Town

**An Envoy for the Lodge** 142

**60** 1 U Milosrdných  
Church of St. Simon and St. Jude

**Service of the Spirits** 144

**61** 1 Salvatorská  
The Church of St. Salvador

This photograph from 1905 reveals the demolition of the Prague ghetto.



# CHARLES BRIDGE

- |   |     |   |     |
|---|-----|---|-----|
| <b>Ignorance of the Iron Curtain</b>                        | 148 | <b>Cleanse Thy Body and Soul</b>                            | 164 |
| 62 1 Mariánské náměstí<br>Municipal Library                 |     | 70 39 Smetanovo nábřeží<br>The Charles Baths                |     |
| <b>The Rosicrucians, the Jesuits</b>                        | 150 | <b>Witnesses of a Paradox</b>                               | 166 |
| 63 5 Mariánské náměstí / 1 Seminářská<br>The Clementinum    |     | 71 5 Novotného lávka<br>Scientific-Technological Society    |     |
| <b>Where Gold Burns</b>                                     | 152 | <b>In vino veritas</b>                                      | 168 |
| 64 3 Karlova / 2 Seminářská<br>The Golden Well              |     | 72 1 Křížovnická / 3 Křížovnické náměstí<br>The Wine Column |     |
| <b>Beginnings of a New Era</b>                              | 154 | <b>The Emperor in God's Mercy</b>                           | 170 |
| 65 7 Liliová<br>The Church of St. Anne                      |     | 73 Křížovnické náměstí<br>Kostel sv. Františka z Assisi     |     |
| <b>Messenger of the Renaissance</b>                         | 156 | <b>Protected by a Magic Shield</b>                          | 172 |
| 66 3 Řetězová<br>Home of the Kunstat and Podebrady Nobility |     | 74 Křížovnické náměstí<br>Old Town Bridge Tower             |     |
| <b>Chronicler of God's Order</b>                            | 158 | <b>Carriers of the Bird's Speech</b>                        | 174 |
| 67 4 Karlova<br>The French Crown                            |     | 75 Charles Bridge<br>The statue of St. Bernard              |     |
| <b>Lux lucet in tenebris</b>                                | 160 | <b>The Bridge of Good Fortune</b>                           | 176 |
| 68 2 Karlova<br>Colloredo-Mansfeld Palace                   |     | 76 Charles Bridge<br>The Crucifixion                        |     |
| <b>Domini Canis</b>   | 162 |   |     |
| 69 4 Křížovnické náměstí<br>The Clementinum                 |     |   |     |

For ten years the Old Town Bridge Tower was horribly "decorated" with the heads of Czech noblemen and knights who were executed on the Old Town Square on 21 June 1621 (see p. 118), after their defeat at the Battle of the White Mountain.

Though public executions were common in this period, the executions on the Old Town Square were extraordinary in both their number and style: the dishonor given the victim's remains was shocking.

Figures of the Czech cultural elite who were put to death included Jan Jessenius, the rector of Charles University, composer Krystof Harant (see p. 303), as well as other important individuals, including writers and travelers.



# LITTLE QUARTER SQUARE

- In the Lap of Mother Earth** 180
- 85** The Legacy of Baron Leonhardi 198  
23 Malostranské náměstí  
Kaiserstein Palace
- Discovery of the Archetypes** 182
- 86** The Secret of the Town Hall 200  
21 Malostranské náměstí  
Little Quarter Town Hall
- 77** Charles Bridge  
The Statue of Bruncvík
- Genius Scarred by Fire** 184
- 87** Arcimboldo 202  
20 Malostranské náměstí / 1 Tomášská  
Sternberg House (Bath)
- 78** U Sovových mlýnů 7  
The Nostiz Boudoir
- The First Masonic Lodge in Prague** 186
- 88** The Number 3 and the Triangle 204  
6/8 Tomášská  
The Golden Three
- 79** 10 Dražického náměstí  
The Stone Bell
- Ludwig van Beethoven** 188
- 89** The Planets of Wallenstein's Fate 206  
4 Valdštejnské náměstí / 10 Letenská  
Wallenstein Palace / Wallenstein Garden
- 80** 11 Lázeňská  
The Golden Unicorn
- The Secret Threshold** 190
- 90** Ne frustra vixisse videar 208  
4 U zlaté studně  
The Golden Well
- 81** Nebovidská  
Nebovidy
- Il Bambino di Praga** 192
- 91** The Lobby for Amadeus 210  
14 Thunovská  
Thun Palace
- 82** 9 Karmelitská  
Church of Our Lady Victorious
- By Order of the Initiated Emperor** 194
- 92** A Time of Fear and Hope 212  
Malostranské náměstí  
Plague Column
- 83** 18 Karmelitská  
House at the Three Golden Hands
- Vrtba Garden** 196
- 93** And Then Came the Baroque... 214  
Malostranské náměstí  
Church of St. Nicholas
- 84** 25 Karmelitská  
Vrtba palace



# HRADČANY AND STRAHOV

- |  |     |   |     |
|--|-----|---|-----|
| <b>Edward Kelley</b>                                 | 218 | <b>The Sign of Lightning</b>                                  | 228 |
| <b>94</b> 8 Jánský vršek<br>The Donkey at the Cradle |     | <b>99</b> 1 Strahovské nádvoří<br>Premonstratensian monastery |     |
| <b>The Arrival of Freemasonry</b>                    | 220 | <b>Astrology Abused</b>                                       | 230 |
| <b>95</b> 12 Šporkova<br>Špork Palace                |     | <b>100</b> 1 Nový svět<br>The Golden Leg                      |     |
| <b>A Bridge over Troubled Waters</b>                 | 222 | <b>The Essence of the World</b>                               | 232 |
| <b>96</b> 33 Nerudova<br>Bretfeld Palace             |     | <b>101</b> 15 Hradčanské náměstí<br>National Gallery          |     |
| <b>The Masonic Uprising</b>                          | 224 | <b>Czechs Against the World</b>                               | 234 |
| <b>97</b> 47 Nerudova<br>The Two Suns                |     | <b>102</b> 16 Hradčanské náměstí<br>The Archbishop's Palace   |     |
| <b>The Devil's Bible</b>                             | 226 |   |     |
| <b>98</b> 13 Úvoz<br>The Swedish Embassy             |     |   |     |

The historical centre of Prague is punctuated by a set of statues which stand near Curtio's house, which no longer exists (see p. 230 and 263). Tycho Brahe (see p. 208) and Johannes Kepler (see p. 158) were among the most interesting figures to play a role in the secret history of the city. Furthermore, they linked Prague with the rest of Europe in a spiritual context.



# PRAGUE CASTLE

- |  |     |  |     |
|--|-----|--|-----|
| <b>Spheres of Fate</b>                                     | 238 | <b>The Open Book</b>   | 252 |
| <b>103</b> Pražský Hrad<br>Na baštách - The Bastions       |     | <b>109</b> Saint Vitus Cathedral<br>South Portal                       |     |
| <b>The Emperor of the Alchemists</b>                       | 240 | <b>Never Leave a Work in Progress</b>                                  | 254 |
| <b>104</b> Pražský Hrad<br>Matthew's Gate                  |     | <b>110</b> 4 Vikářská<br>Powder Tower (Mihulka)                        |     |
| <b>The Coming of the Black Order</b>                       | 242 | <b>The Alchemists Credo</b>  | 256 |
| <b>105</b> Pražský Hrad<br>1 <sup>st</sup> Courtyard       |     | <b>111</b> 5 Jiřské Square<br>St. George's Basilica / National Gallery |     |
| <b>Dilemma of the Mason President</b>                      | 244 | <b>Twofold States of the Soul</b>                                      | 258 |
| <b>106</b> Pražský Hrad<br>2 <sup>nd</sup> Courtyard       |     | <b>112</b> 12 Zlatá ulička<br>The Last Lantern                         |     |
| <b>The Mysteries of Cathedrals</b>                         | 246 | <b>Pietro Andrea Matthioli</b>   | 260 |
|  |     | <b>113</b> U Prašného mostu<br>The Royal Gardens                       |     |
| <b>Reaching for the Heavens</b>                            | 248 | <b>A. D. S. I. T.</b>  | 262 |
| <b>107</b> Pražský Hrad<br>3 <sup>rd</sup> Courtyard       |     | <b>114</b> Royal Palace Gardens<br>Queen Anne's Summer Palace          |     |
| <b>The Cathedral Builders</b>                              | 250 | <b>Music of the Currents</b>   | 264 |
| <b>108</b> Saint Vitus Cathedral<br>Saint Wenceslas Chapel |     | <b>115</b> 1 Mickiewiczova<br>Frantisek Bilek's Villa                  |     |

Petr Parler's original architectural drawing shows the southern side of the great tower in St. Vitus cathedral, with windows into the chapter hall and the Hazmburk chapel. The upper part of the plan shows the first belfry. The realization was later partially changed (see p. 250 and 252).





# CHARLES SQUARE

**In the Name of the Rosicrucians** 268

**116** 24 Karlovo náměstí / 2 Řeznická  
Salma Palace

**Salvation and the Damnation** 270

**117** 35 Karlovo náměstí  
Church of St Ignatius

**Under the King's Protection** 272

**118** Karlovo náměstí  
Chapel of the Divine Host

**Tempter of the World** 274

**119** 40 Karlovo náměstí  
Faust's House

**Emissary of the Black Order** 276

**120** 9 Resslova  
Church of St. Cyril and Methodius

**The Hanged Man, Fool and Death** 278

**121** 8 Resslova  
Business Academy

**Sebastian Kneipp** 280

**122** Slovanský ostrov  
Žofin House

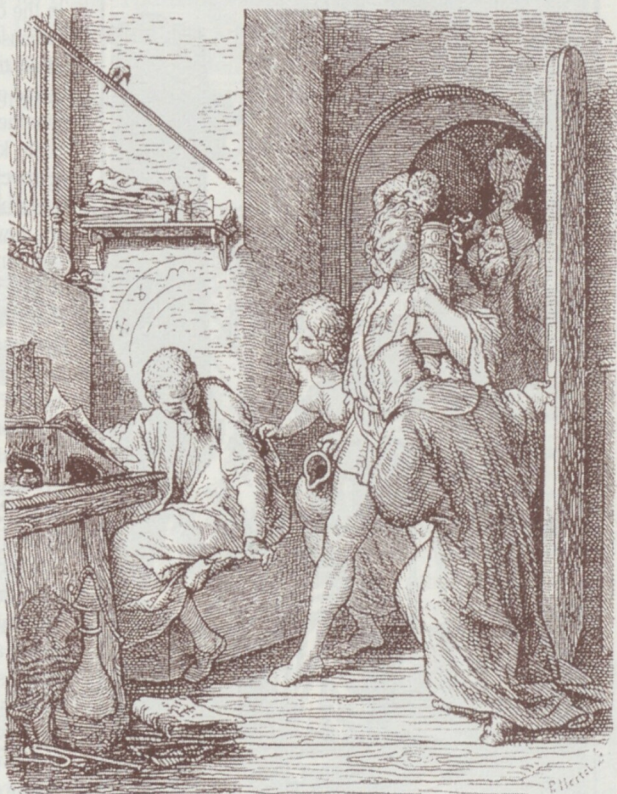
**A Journey against Time** 282

**123** 15 Myslíkova  
Grafia

**A "Holy" War** 284

**124** 8 Spálená  
Church of the Holy Trinity

Even the renowned painter Josef Manes illustrated a version of The History of Doctor Faust. The legend of Faust who deals with the Devil in exchange for hidden knowledge, is a story which has been tied to Prague since the Middle Ages.



# REPUBLICAN SQUARE

- |  |     |  |     |
|--|-----|--|-----|
| <b>Channel to the Next World</b>                                 | 288 | <b>An Energy for the 21<sup>st</sup> Century</b>               | 296 |
| <b>125</b> 2 Hybernská / 12 Senovážná<br>Hotel de Saxe Courtyard |     | <b>129</b> 24 Truhlářská<br>Mandala                            |     |
| <b>Poet and Scientist</b>  | 290 | <b>The Golden Age of Masonry</b>                               | 298 |
| <b>126</b> 28 Na Příkopě / 5 Senovážná<br>The Blue Star          |     | <b>130</b> Klimentská<br>The Orphanage of St. John the Baptist |     |
| <b>The Return of a Lost Son</b>                                  | 292 | <b>A Hundred Years Before Luther</b>                           | 300 |
| <b>127</b> 5 Náměstí republiky<br>Municipal House                |     | <b>131</b> 15 Soukenická<br>The Union of Brethren              |     |
| <b>A Fate Named Alchemy</b>                                      | 294 | <b>Eccentricities of Rudolph's Prague</b>                      | 302 |
| <b>128</b> 9 Na Poříčí<br>Hotel Atlantic                         |     | <b>132</b> Nábřeží Edvarda Beneše<br>Rudolph's Gallery         |     |



Prague's Municipal House (see p. 292) is majestic in its architecture and decor, thanks in part to world-renowned Art Nouveau painter Alfons Mucha. After he moved to Paris Mucha became a freemason (see p. 28), making use of an array of masonic symbols in his work. Some basic symbols can be seen in Painting of a Mason.