

Contents

Preface xvii

1 Introduction to Natural Hazards 2

CASE HISTORY: Nevado del Ruiz: A Story of People, Land Use, and Volcanic Eruption 2

1.1 Why Studying Natural Hazards Is Important 5

Processes: Internal and External 5

Hazard, Disaster, or Catastrophe 6

Death and Damage Caused by Natural Hazards 7

1.2 Role of History in Understanding Hazards 8

1.3 Geologic Cycle 9

The Tectonic Cycle 9

The Rock Cycle 13

The Hydrologic Cycle 14

Biogeochemical Cycles 15

1.4 Fundamental Concepts for Understanding Natural Processes as Hazards 15

CONCEPT 1: Hazards Are Predictable from Scientific Evaluation 16

Science and Natural Hazards 16

Hazards Are Natural Processes 16

Forecast, Prediction, and Warning of Hazardous Events 18

CONCEPT 2: Risk Assessment Is an Important Component of Our Understanding of the Effects of Hazardous Processes 19

CONCEPT 3: Linkages Exist Between Natural Hazards and Between Hazards and the Physical Environment 20

CONCEPT 4: Hazardous Events that Previously Produced Disasters Are Now Producing Catastrophes 20

Examples of Disasters in Densely Populated Areas 20

Human Population Growth 21

Magnitude and Frequency of Hazardous Events 21

BOX 1.1 CASE STUDY: Human Population through History 22

BOX 1.2 CASE STUDY: The Magnitude-Frequency Concept 23

CONCEPT 5: Consequences of Hazards Can Be Minimized 24

Reactive Response: Impact of and Recovery from Disasters 24

Anticipatory Response: Avoiding and Adjusting to Hazards 25

1.5 Many Hazards Provide a Natural Service Function 26

1.6 Global Climate Change and Hazards 26

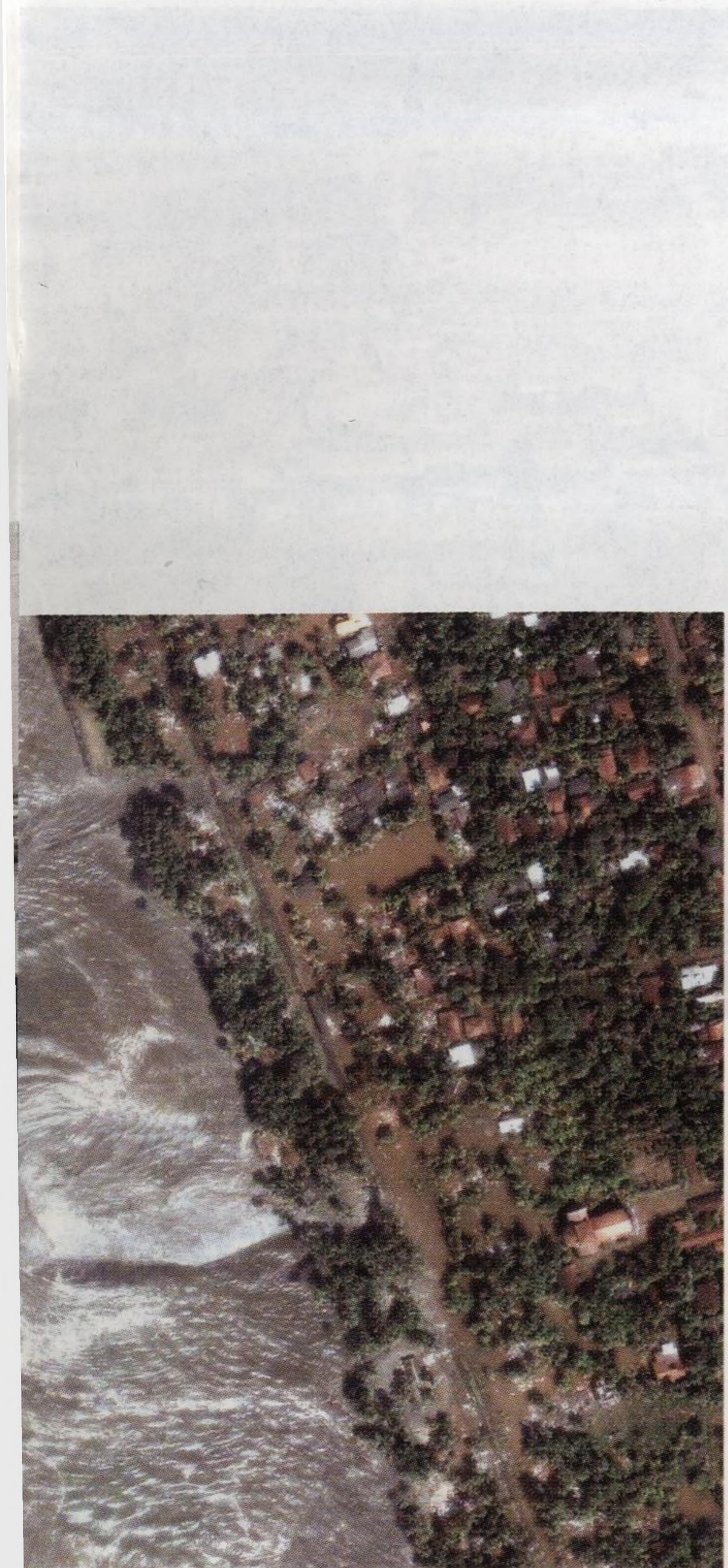


2 Earthquakes 30

CASE HISTORY: Catastrophic Earthquakes of the Early Twenty-First Century—Lessons Learned 30

- 2.1 Introduction to Earthquakes 33**
 Earthquake Magnitude 33
 Earthquake Intensity 34
- 2.2 Earthquake Processes 38**
 Process of Faulting 38
 Fault Activity 41
 Tectonic Creep and Slow Earthquakes 41
 Seismic Waves 42
- 2.3 Earthquake Shaking 43**
 Distance to the Epicenter 43
 Depth of Focus 45
 Direction of Rupture 45
 Local Geologic Conditions 45
- 2.4 The Earthquake Cycle 49**
- 2.5 Geographic Regions at Risk from Earthquakes 50**
 Plate Boundary Earthquakes 51
- BOX 2.1 SURVIVOR STORY: The 1989 “World Series by the Bay” 52**
 Intraplate Earthquakes 53
- 2.6 Effects of Earthquake and Linkages with Other Natural Hazards 53**
 Shaking and Ground Rupture 53
 Liquefaction 55
 Regional Changes in Land Elevation 56
 Landslides 56
 Fires 56
 Disease 56
- 2.7 Natural Service Functions of Earthquakes 57**
 Groundwater and Energy Resources 57
 Mineral Resources 57
 Landform Development 57
 Future Earthquake Hazard Reduction 58
- 2.8 Human Interaction with Earthquakes 58**
 Earthquakes Caused by Human Activity 58
- 2.9 Minimizing the Earthquake Hazard 58**
 The National Earthquake Hazard Reduction Program 59
- BOX 2.2 CASE STUDY: The Denali Fault Earthquake: Estimating Potential Ground Rupture Pays Off 60**
 Estimation of Seismic Risk 61
 Short-Term Prediction 62
 The Future of Earthquake Prediction 63
 Earthquake Warning Systems 63





**BOX 2.3 PROFESSIONAL PROFILE: Andrea Donnellan,
Earthquake Forecaster 64**

- 2.10 Perception of and Adjustment to the Earthquake Hazard 65**
 Perception of the Earthquake Hazard 65
 Community Adjustments to the Earthquake Hazard 66
 Personal Adjustments: Before, During, and After an Earthquake 67
 Hazard City: Assignments in Applied Geology 71

3 Tsunamis 72

CASE HISTORY: Indonesian Tsunami 72

3.1 Introduction 77

How Do Earthquakes Cause a Tsunami? 78

**BOX 3.1 SURVIVOR STORY: Tsunami in the Lowest
Country on Earth 80**

How Do Landslides Cause a Tsunami? 81

3.2 Regions at Risk 82

3.3 Effects of Tsunamis and Linkages with Other Natural Hazards 83

3.4 Natural Service Functions of Tsunamis 85

3.5 Human Interaction with Tsunamis 85

3.6 Minimizing the Tsunami Hazard 85

Detection and Warning 86

Structural Control 86

Tsunami Runup Maps 86

Land Use 86

Probability Analysis 88

Education 89

Tsunami Ready Status 90

3.7 Perception and Personal Adjustment to Tsunami Hazard 91

**BOX 3.2 PROFESSIONAL PROFILE: Jose Borrero—
Tsunami Scientist 92**

4 Volcanoes 96

CASE HISTORY: Mt. Unzen, 1991 96

4.1 Introduction to Volcanoes 96

Magma 99

Volcano Types 100

Volcanic Features 104

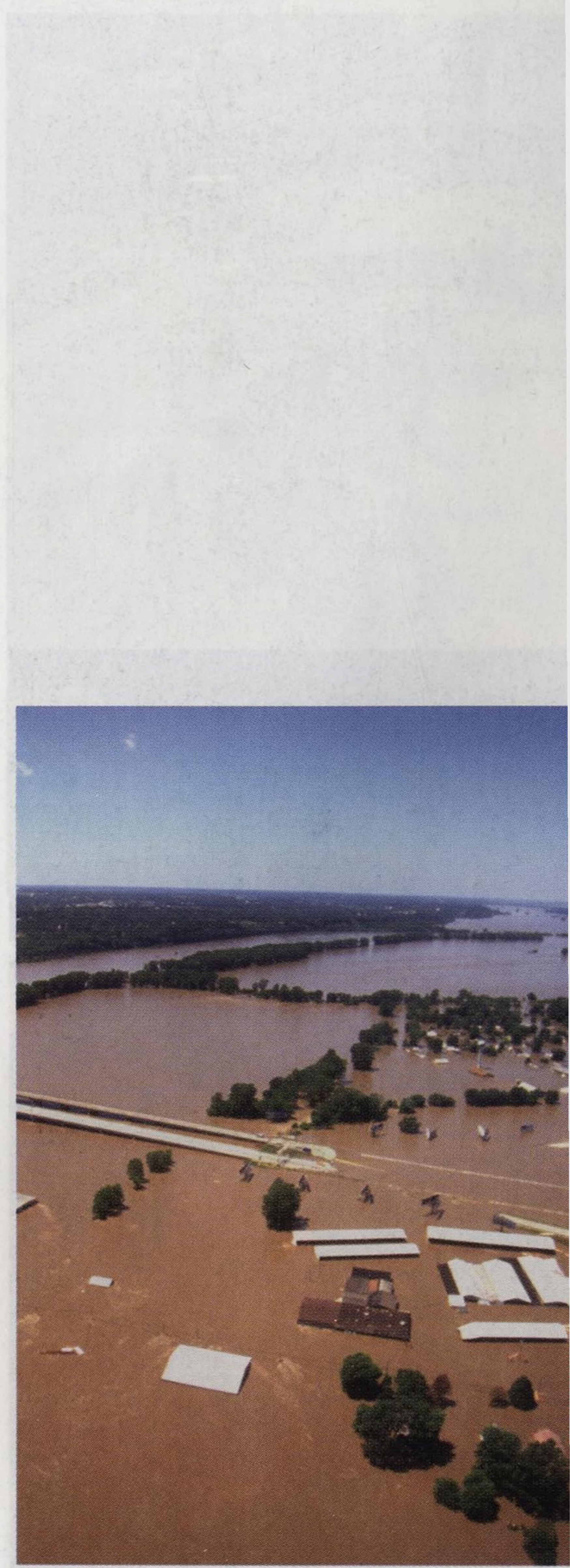
Volcano Origins 107

- 4.2 **Geographic Regions at Risk for Volcanoes** 109
- 4.3 **Effects of Volcanoes** 109
 Lava Flows 109
 Pyroclastic Activity 110
 Poisonous Gases 112
 Debris Flows, Mudflows and Other Mass Movements 115
BOX 4.1 CASE STUDY: Volcanic Landslides and Tsunamis 117
 Mount St. Helens 1980–2007: From Lateral Blasts to Lava Flows 117
- 4.4 **Linkages between Volcanoes and Other Natural Hazards** 122
- 4.5 **Natural Service Functions of Volcanoes** 123
 Volcanic Soils 123
 Geothermal Power 123
 Mineral Resources 124
 Recreation 124
 Creation of New Land 124
- 4.6 **Human Interaction with Volcanoes** 124
- 4.7 **Minimizing the Volcanic Hazard** 124
 Forecasting 124
 Volcanic Alert or Warning 127
BOX 4.2 PROFESSIONAL PROFILE: Chris Eisinger, Studying Active Volcanoes 128
BOX 4.3 SURVIVOR STORY: A Close Call with Mount St. Helens 129
- 4.8 **Perception of and Adjustment to the Volcanic Hazard** 130
 Perception of Volcanic Hazard 130
 Adjustments to Volcanic Hazards 131
 Attempts to Control Lava Flows 131
 Hazard City: Assignments in Applied Geology 133

5 Flooding 134

CASE HISTORY: Mississippi River Flooding, 1973 and 1993 134

- 5.1 **An Introduction to Rivers** 138
 Earth Material Transported by Rivers 140
 River Velocity, Discharge, Erosion, and Sediment Deposition 140
BOX 5.1 CASE STUDY: Flooding on the Delta of the Ventura River 142
 Channel Patterns and Floodplain Formation 144
- 5.2 **Flooding** 146
 Flash Floods and Downstream Floods 147
BOX 5.2 CASE STUDY: Magnitude and Frequency of Floods 148
BOX 5.3 SURVIVOR STORY: Flash Flood 152



- 5.3 **Geographic Regions at Risk for Flooding** 153
- 5.4 **Effects of Flooding and Linkages between Floods and Other Hazards** 154
- 5.5 **Natural Service Functions** 155
 - Fertile Lands 155
 - Aquatic Ecosystems 155
 - Sediment Supply 155
- 5.6 **Human Interaction with Flooding** 155
 - Land-Use Changes 155
 - BOX 5.4 CASE STUDY: The Grand Canyon Flood of 1996** 156
 - Dam Construction 159
 - Urbanization and Flooding 159
 - BOX 5.5 CASE STUDY: Flash Floods in Eastern Ohio** 161
- 5.7 **Minimizing the Flood Hazard** 161
 - The Structural Approach 161
 - Channel Restoration: Alternative to Channelization 164
- 5.8 **Perception of and Adjustment to the Flood Hazard** 165
 - Perception of the Flood Hazard 165
 - Adjustments to the Flood Hazard 168
 - BOX 5.6 PROFESSIONAL PROFILE: Eve Gruntfest—Geographer** 169
 - Relocating People from Floodplains: Examples from North Carolina and North Dakota 170
 - Personal Adjustment: What to Do and What Not to Do 171
 - Hazard City: Assignments in Applied Geology 175

6 **Mass Wasting** 176

CASE HISTORY: La Conchita: Southern California Landslide Disaster of 2005—Lessons Learned 176

- 6.1 **An Introduction to Landslides** 180
 - Slope Processes 180
 - Types of Landslides 180
 - Forces on Slopes 181
 - Snow Avalanches 190
- 6.2 **Geographic Regions at Risk from Landslides** 191
- 6.3 **Effects of Landslides and Linkages with Other Natural Hazards** 192
 - Effects of Landslides 192
 - Linkages between Landslides and Other Natural Hazards 192
- 6.4 **Natural Service Functions of Landslides** 192
 - BOX 6.1 SURVIVOR STORY: Landslide** 193



BOX 6.2 PROFESSIONAL PROFILE: Bob Rasely, Mass Wasting Specialist 194

6.5 Human Interaction with Landslides 194

Timber Harvesting and Landslides 195

Urbanization and Landslides 195

BOX 6.3 CASE STUDY: Portuguese Bend, California 196

6.6 Minimizing the Landslide Hazard 199

Identification of Potential Landslides 199

Prevention of Landslides 199

Landslide Warning Systems 202

6.7 Perception of and Adjustment to the Landslide Hazard 203

Perception of the Landslide Hazard 203

Adjustments to the Landslide Hazard 204

Personal Adjustments: What You Can Do to Minimize Your Landslide Hazard 204

Hazard City: Assignments in Applied Geology 207

7 Subsidence and Soils 208

CASE HISTORY: Venice Is Sinking 208

7.1 Introduction to Subsidence and Soil Volume Change 208

Karst 210

BOX 7.1 SURVIVOR STORY: Sinkhole Drains Lake 214

Thermokarst 214

Sediment and Soil Compaction 215

Earthquakes 215

BOX 7.2 CASE STUDY: Subsidence of the Mississippi Delta 216

Underground Drainage of Magma 218

Expansive Soils 218

Frost-Susceptible Soils 220

7.2 Regions at Risk for Subsidence and Soil Volume Change 221

7.3 Effects of Subsidence and Soil Volume Change 222

Sinkhole Formation 222

Groundwater Conditions 223

Damage Caused by Melting Permafrost 223

Coastal Flooding and Loss of Wetlands 224

Damage Caused by Soil Volume Change 225

7.4 Linkages between Subsidence, Soil Volume Change, and Other Natural Hazards 225

7.5 Natural Service Functions of Subsidence and Soil Volume Change 226

Water Supply 227

Aesthetic and Scientific Resources 227

Unique Ecosystems 227



- 7.6 **Human Interaction with Subsidence and Soil Volume Change** 227
 - Withdrawal of Fluids 227
 - Underground Mining 228
 - Melting Permafrost 229
 - Restricting Deltaic Sedimentation 230
 - Altering Surface Drainage 230
 - Poor Landscaping Practices 230

BOX 7.3 PROFESSIONAL PROFILE: Helen Delano, Environmental Geologist 231

- 7.7 **Minimizing Subsidence and Soil Volume Change** 232
- 7.8 **Perception of and Adjustment to Subsidence and Soil Volume Change** 232
 - Perception of Subsidence and Soil Volume Change 232
 - Adjustment to Subsidence and Soil Volume Change 233

8 Atmosphere and Severe Weather 236

CASE HISTORY: Tri-State Tornado, March 18, 1925 236

- 8.1 **Energy** 238
 - Types of Energy 239
 - Heat Transfer 239
- 8.2 **Earth's Energy Balance** 240
 - Electromagnetic Energy 241
 - Energy Behavior 241
- 8.3 **The Atmosphere** 242
 - Composition of the Atmosphere 242
 - Structure of the Atmosphere 242
- 8.4 **Weather Processes** 244
 - Atmospheric Pressure 244
 - Unstable Air 246
 - Coriolis Effect 246
 - Fronts 246

- 8.5 **Hazardous Weather** 248
 - Thunderstorms 248

BOX 8.1 CASE STUDY: Lightning 251

BOX 8.2 SURVIVOR STORY: Struck by Lightning 253

Tornadoes 254

BOX 8.3 PROFESSIONAL PROFILE: Sarah Tessendorf—Severe Storm Meteorologist 258

Blizzards and Ice Storms 258

BOX 8.4 CASE STUDY: The Great Northeastern Ice Storm of 1998 261

Fog 263

Drought 264



Mountain Windstorms 264

Dust and Sand Storms 264

Heatwaves 264

**BOX 8.5 CASE STUDY: Europe's Hottest Summer
in over 500 Years** 267

8.6 Human Interaction with Weather 271

8.7 Linkages with Other Hazards 272

8.8 Natural Service Functions of Severe Weather 272

8.9 Minimizing Severe Weather Hazards 272

Forecasting and Prediction Weather Hazards 272

Adjustment to the Severe Weather Hazard 273

9 Hurricanes and Extratropical Cyclones 278

CASE HISTORY: Hurricane Katrina 278

9.1 Introduction to Cyclones 285

BOX 9.1 SURVIVOR STORY: Katrina 286

Classification 288

Naming 289

9.2 Cyclone Development 289

Tropical Cyclones 289

Extratropical Cyclones 293

9.3 Geographic Regions at Risk for Cyclones 296

9.4 Effects of Cyclones 299

Storm Surge 299

High Winds 300

Heavy Rains 302

9.5 Linkages between Cyclones and Other Natural Hazards 303

9.6 Natural Service Functions of Cyclones 304

9.7 Human Interaction with Cyclones 304

9.8 Minimizing the Effects of Cyclones 304

Forecasts and Warnings 305

**BOX 9.2 CASE STUDY: Hurricane Intensity and Warm Seas—Opal
and Katrina Meet “Eddy”** 306

BOX 9.3 PROFESSIONAL PROFILE: The Hurricane Hunters 310

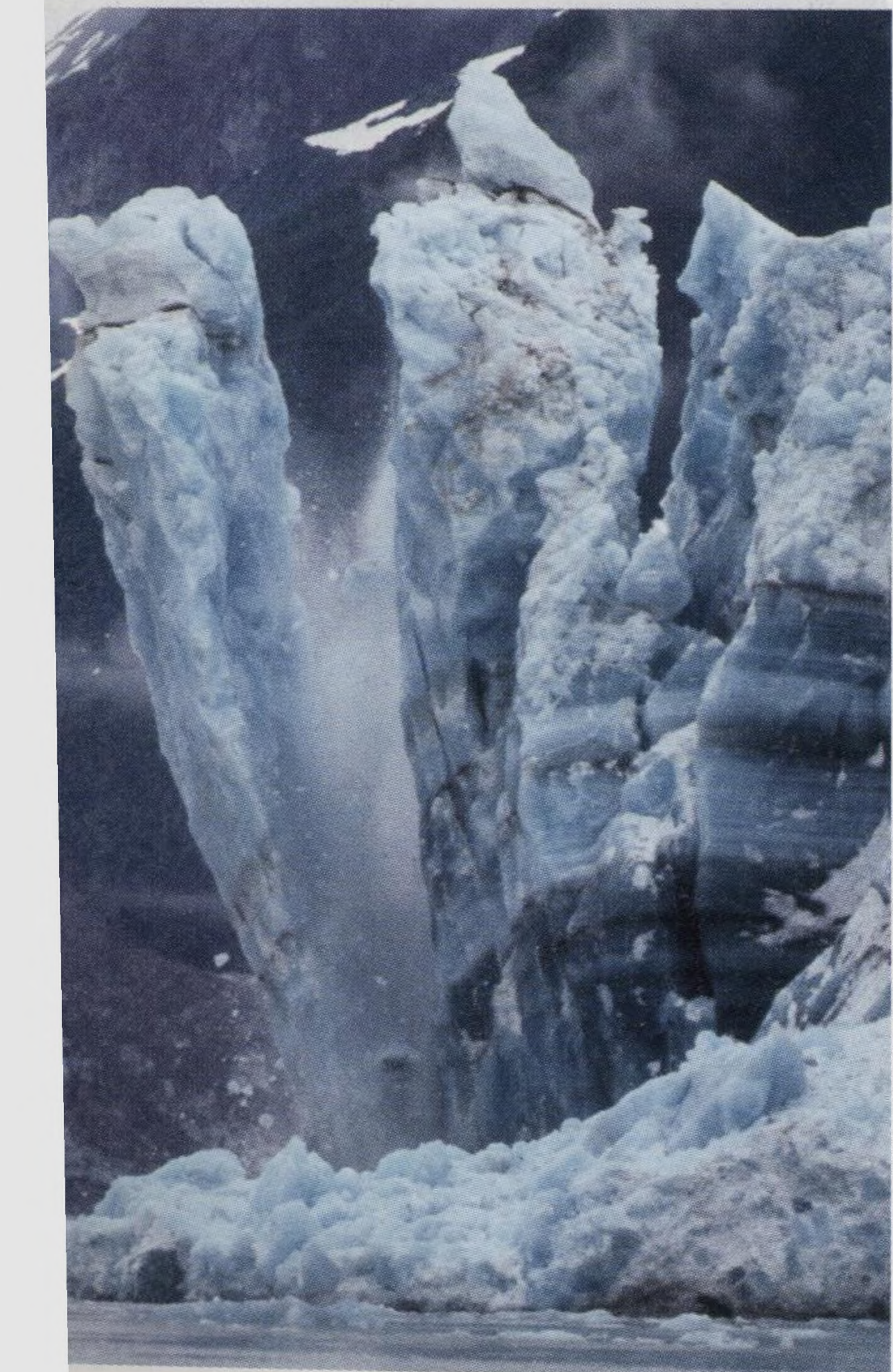
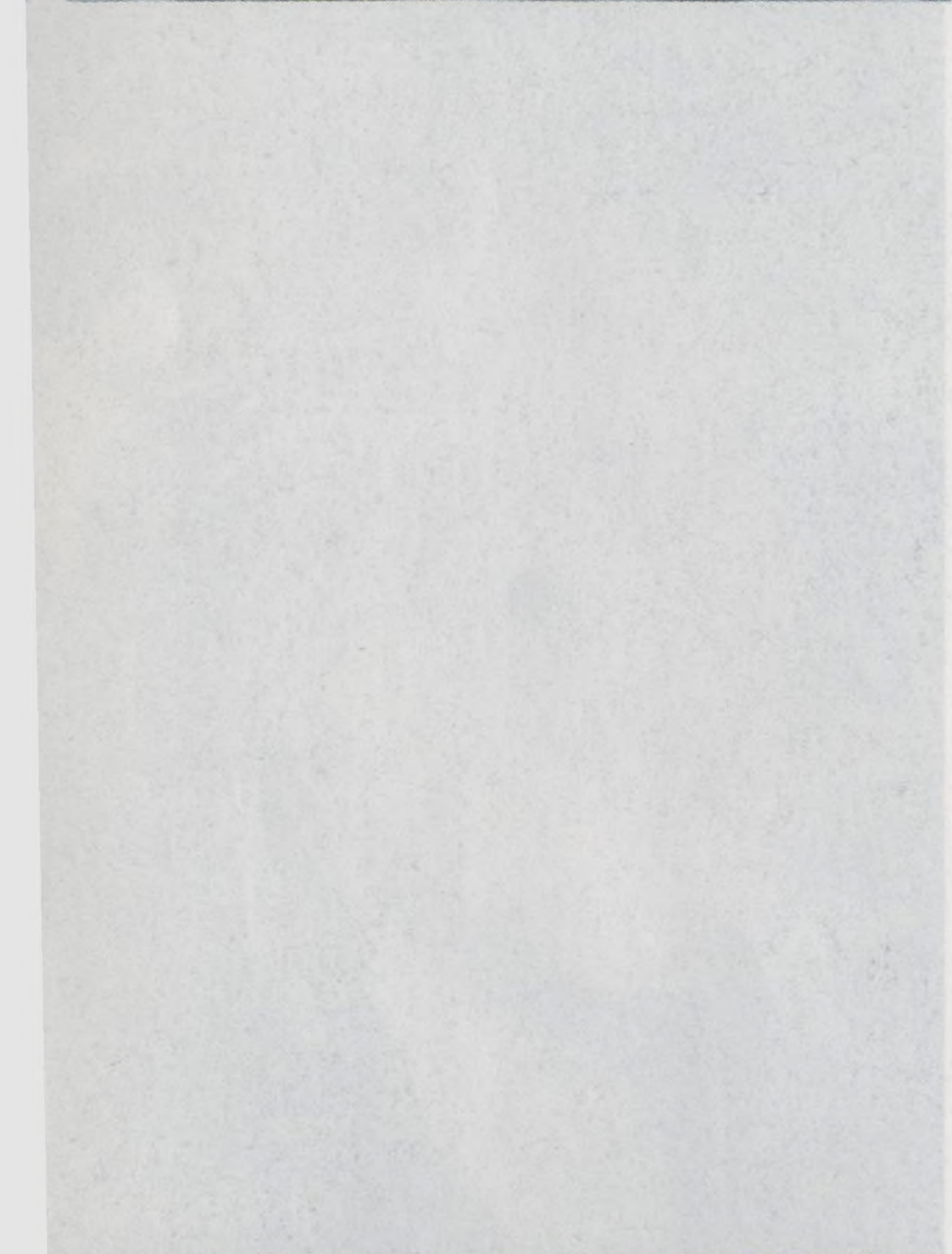
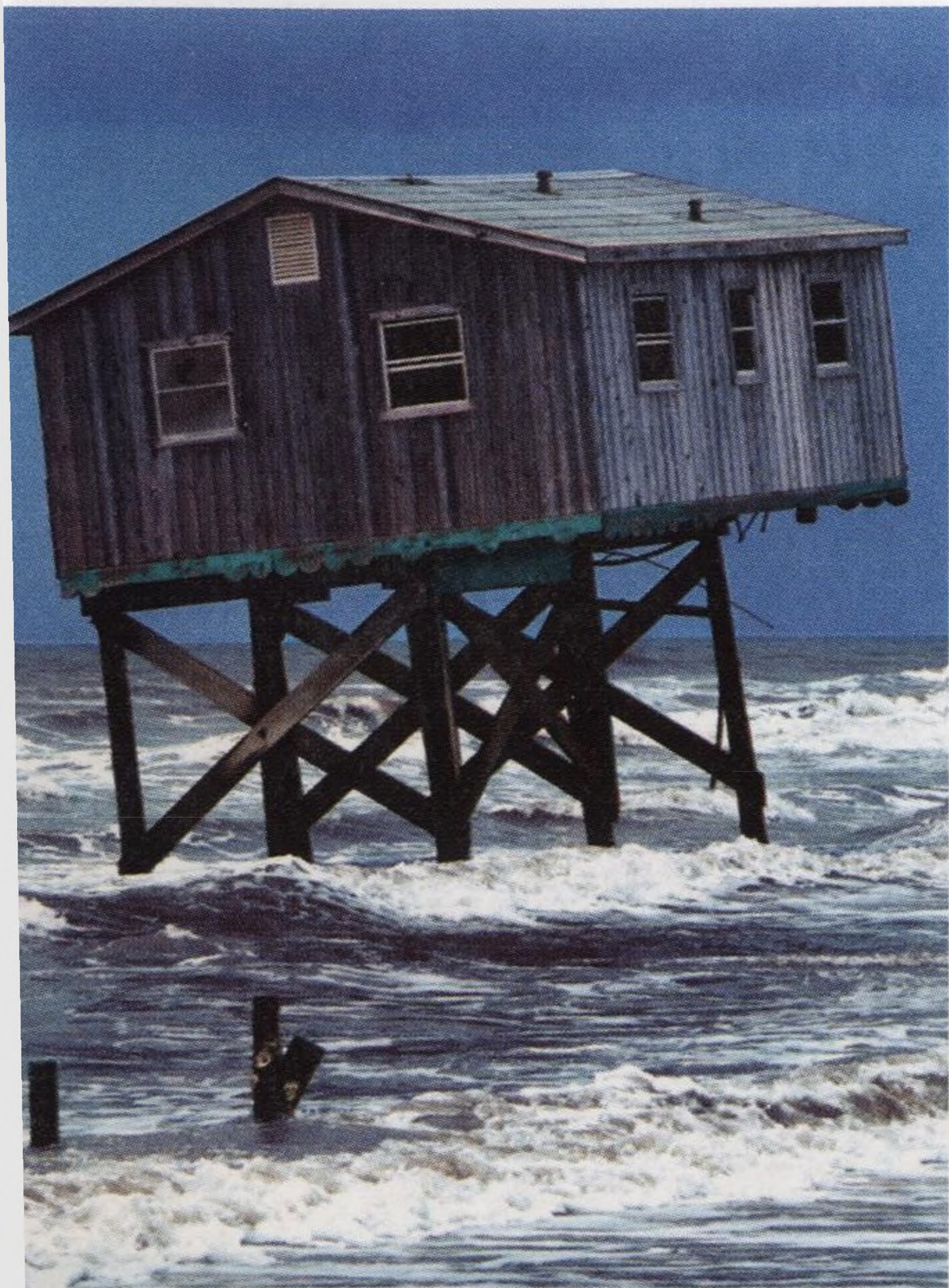
9.9 Perception of and Adjustment to Cyclones 312

Perception of Cyclones 312

Adjustment to Hurricanes and Extratropical Cyclones 312

Hazard City: Assignments in Applied Geology 315





10 Waves, Currents, and Coastlines 316

CASE HISTORY: Folly Island 316

- 10.1 Introduction to Coastal Hazards 319
- 10.2 Coastal Processes 320
 - Waves 320
 - BOX 10.1 CASE STUDY: Rogue Waves** 321
 - Beach Form and Processes 324
- 10.3 Sea Level Change 325
- 10.4 Geographic Regions at Risk for Coastal Hazards 327
- 10.5 Effects of Coastal Processes 328
 - Rip Currents 328
 - BOX 10.2 SURVIVOR STORY: Rip Current** 330
 - Coastal Erosion 331
 - BOX 10.3 PROFESSIONAL PROFILE: Rob Thieler, Marine Geologist** 332
- 10.6 Linkages between Coastal Processes and Other Natural Hazards 334
- 10.7 Natural Service Functions of Coastal Processes 335
- 10.8 Human Interaction with Coastal Processes 335
 - The Atlantic Coast 335
 - The Gulf Coast 338
 - The Great Lakes 338
 - Canadian Seacoasts 339
- 10.9 Minimizing the Effects of Coastal Hazards 339
 - Hard Stabilization 339
 - Soft Stabilization 340
- 10.10 Perception of and Adjustment to Coastal Hazards 343
 - Perception of Coastal Hazards 343
 - Adjustment to Coastal Hazards 343
 - BOX 10.4 CASE STUDY: E-Lines and E-Zones** 344
 - BOX 10.5 CASE STUDY: Moving the Cape Hatteras Lighthouse** 345
 - Hazard City: Assignments in Applied Geology 349

11 Climate and Climate Change 350

CASE HISTORY: California Threatened by Climate Change 350

- 11.1 Climate and Weather 352
 - Climate Zones 352
 - The Koeppen System and Natural Processes 353

- 11.2 The Atmosphere** 353
 Atmospheric Composition 353
 Permanent Gases 353
 Variable Gases and Aerosols 354
 Structure of the Atmosphere 355
 Atmospheric Circulation 355
- 11.3 Climate Change** 356
 Glaciations 357
BOX 11.1 CASE STUDY: Global Climate Models 358
 The Greenhouse Effect 359
 Global Temperature Change 362
 Why Does Climate Change? 364
- 11.4 Effects of Climate Change** 366
 Climate Patterns 366
 Changes in the Hydrosphere 367
BOX 11.2 CASE STUDY: El Niño 368
 Changes in the Cryosphere 369
 Changes in the Biosphere 370
BOX 11.3 SURVIVOR STORY: Residents of the Maldives Islands 371
 Desertification and Drought 373
 Wildfires 373
- 11.5 Minimizing the Effects of Climate Change** 373
BOX 11.4 PROFESSIONAL PROFILE: Sally Benson—Climate and Energy Scientist 374
 International Agreements 376
 Carbon Sequestration 376
 Fossil Fuels and the Future Threat of Climate Change 377
 Hazard City: Assignments in Applied Geology 381

12 Wildfires 382

CASE HISTORY: Wildfires in 2002—Colorado and Arizona 382

- 12.1 Introduction to Wildfire** 384
- 12.2 Wildfire as a Process** 384
BOX 12.1 CASE STUDY: Indonesian Fires of 1997–1998 385
 Fire Environment 387
- 12.3 Geographic Regions at Risk from Wildfires** 391
- 12.4 Effects of Wildfires and Linkages with Other Natural Hazards** 391
 Effects on the Geologic Environment 391
 Effects on the Atmospheric Environment 392
BOX 12.2 CASE STUDY: Wildfire in Southern California 393
 Linkages with Climate Change 396
 Effects on the Biological Environment 396
BOX 12.3 PROFESSIONAL PROFILE: Wildfires 397



- 12.5 **Natural Service Functions of Wildfires** 398
 Benefits to Soil 398
 Benefits to Plants and Animals 399
 Yellowstone Fires of 1988 399
- 12.6 **Minimizing the Wildfire Hazard** 399
 Fire Management 399
- 12.7 **Perception of and Adjustment to the Wildfire Hazard** 401
 Perception of the Wildfire Hazard 401
 Adjustments to the Wildfire Hazard 402
 Personal Adjustment to the Fire Hazard 402

BOX 12.4 SURVIVOR STORY: Texas Grassfire—“We can’t stop this one—Those are words you don’t want to hear” 403

13 Impacts and Extinctions 406

CASE HISTORY: The Tunguska Event 406

- 13.1 **Earth’s Place in Space** 408
 Asteroids, Meteoroids, and Comets 410
- 13.2 **Airbursts and Impacts** 411
BOX 13.1 SURVIVOR STORY: Meteorites in Chicagoland 412
 Impact Craters 413
- 13.3 **Mass Extinctions** 418
BOX 13.2 CASE STUDY: Uniformitarianism, Gradualism, and Catastrophe 419
 K-T Boundary Mass Extinction 420
BOX 13.3 CASE STUDY: Impact, Extinction, and the Ice Age 421
- 13.4 **Linkages with Other Natural Hazards** 427
- 13.5 **Minimizing the Impact Hazard** 428
 Risk Related to Impacts 428
 Minimizing the Impact Hazard 429
BOX 13.4 CASE STUDY: Near-Earth Objects 430
BOX 13.5 PROFESSIONAL PROFILE: Dr. Michael J.S. Belton 431

Appendix A: Minerals 434

Appendix B: Rocks 442

Appendix C: Maps and Related Topics 444

Appendix D: How Geologists Determine Geologic Time 451

Glossary 454

References 467

Index 479

